

PHILIPPINE BIDDING DOCUMENTS

**CONSTRUCTION OF
GENDER-NEUTRAL
TOILET AT ROMBLON
AIRPORT GAD**

Government of the Republic of the Philippines

A3-POI-05-2025

Sixth Edition
July 2020

Preface

These Philippine Bidding Documents (PBDs) for the procurement of Infrastructure Projects (hereinafter referred to also as the “Works”) through Competitive Bidding have been prepared by the Government of the Philippines for use by all branches, agencies, departments, bureaus, offices, or instrumentalities of the government, including government-owned and/or -controlled corporations, government financial institutions, state universities and colleges, local government units, and autonomous regional government. The procedures and practices presented in this document have been developed through broad experience, and are for mandatory use in projects that are financed in whole or in part by the Government of the Philippines or any foreign government/foreign or international financing institution in accordance with the provisions of the 2016 revised Implementing Rules and Regulations (IRR) of Republic Act (RA) No. 9184.

The PBDs are intended as a model for admeasurements (unit prices or unit rates in a bill of quantities) types of contracts, which are the most common in Works contracting.

The Bidding Documents shall clearly and adequately define, among others: (i) the objectives, scope, and expected outputs and/or results of the proposed contract; (ii) the eligibility requirements of Bidders; (iii) the expected contract duration; and (iv) the obligations, duties, and/or functions of the winning Bidder.

Care should be taken to check the relevance of the provisions of the PBDs against the requirements of the specific Works to be procured. If duplication of a subject is inevitable in other sections of the document prepared by the Procuring Entity, care must be exercised to avoid contradictions between clauses dealing with the same matter.

Moreover, each section is prepared with notes intended only as information for the Procuring Entity or the person drafting the Bidding Documents. They shall not be included in the final documents. The following general directions should be observed when using the documents:

- a. All the documents listed in the Table of Contents are normally required for the procurement of Infrastructure Projects. However, they should be adapted as necessary to the circumstances of the particular Project.
- b. Specific details, such as the “*name of the Procuring Entity*” and “*address for bid submission*,” should be furnished in the Instructions to Bidders, Bid Data Sheet, and Special Conditions of Contract. The final documents should contain neither blank spaces nor options.
- c. This Preface and the footnotes or notes in italics included in the Invitation to Bid, BDS, General Conditions of Contract, Special Conditions of Contract, Specifications, Drawings, and Bill of Quantities are not part of the text of the final document, although they contain instructions that the Procuring Entity should strictly follow.

- d. The cover should be modified as required to identify the Bidding Documents as to the names of the Project, Contract, and Procuring Entity, in addition to date of issue.
- e. Modifications for specific Procurement Project details should be provided in the Special Conditions of Contract as amendments to the Conditions of Contract. For easy completion, whenever reference has to be made to specific clauses in the Bid Data Sheet or Special Conditions of Contract, these terms shall be printed in bold typeface on Sections I (Instructions to Bidders) and III (General Conditions of Contract), respectively.
- f. For guidelines on the use of Bidding Forms and the procurement of Foreign-Assisted Projects, these will be covered by a separate issuance of the Government Procurement Policy Board.

TABLE OF CONTENTS

GLOSSARY OF	5
TERMS, ABBREVIATIONS, AND ACRONYMS	5
SECTION I. INVITATION TO BID	8
SECTION II. INSTRUCTIONS TO BIDDERS	11
1. Scope of Bid	12
2. Funding Information	12
3. Bidding Requirements	12
4. Corrupt, Fraudulent, Collusive, Coercive, and Obstructive Practices	12
5. Eligible Bidders	13
6. Origin of Associated Goods	13
7. Subcontracts	13
8. Pre-Bid Conference	13
9. Clarification and Amendment of Bidding Documents	13
10. Documents Comprising the Bid: Eligibility and Technical Components	13
11. Documents Comprising the Bid: Financial Component	14
12. Alternative Bids	14
13. Bid Prices	15
14. Bid and Payment Currencies	15
15. Bid Security	15
16. Sealing and Marking of Bids	15
17. Deadline for Submission of Bids	15
18. Opening and Preliminary Examination of Bids	16
19. Detailed Evaluation and Comparison of Bids	16
20. Post Qualification	16
21. Signing of the Contract	16
SECTION III. BID DATA SHEET	17
SECTION IV. GENERAL CONDITIONS OF CONTRACT	23
1. Scope of Contract	24
2. Sectional Completion of Works	24
3. Possession of Site	24
4. The Contractor's Obligations	24

5. Performance Security	25
6. Site Investigation Reports	25
7. Warranty	25
8. Liability of the Contractor	25
9. Termination for Other Causes	25
10. Dayworks	26
11. Program of Work	26
12. Instructions, Inspections and Audits	26
13. Advance Payment	26
14. Progress Payments	27
15. Operating and Maintenance Manuals	27
SECTION V. SPECIAL CONDITIONS OF CONTRACT	28
SECTION VI. SPECIFICATIONS	30
SECTION VII. DRAWINGS	35
SECTION VIII. BILL OF QUANTITIES	38
SECTION IX. CHECKLIST OF TECHNICAL AND FINANCIAL DOCUMENTS	65
BIDDING FORMS	68
(ANNEX "A")	69
CAAP-BAC-SF Annex "A" Form 1	70
CAAP-BAC-SF Annex "A" Form 2	71
CAAP-BAC-SF Annex "A" Form 3	72
CAAP-BAC-SF Annex "A" Form 4	73
CAAP-BAC-SF Annex "A" Form 5a	74
CAAP-BAC-SF Annex "A" Form 5b	75
CAAP-BAC-SF Annex "A" Form 5c	77
CAAP-BAC-SF Annex "A" Form 6	79
CAAP-BAC-SF Annex "A" Form 7	80
CAAP-BAC-SF Annex "A" Form 8	83
(ANNEX "B")	85
CAAP-BAC-SF Annex "B" Form 1	86

Glossary of Terms, Abbreviations, and Acronyms

ABC – Approved Budget for the Contract.

ARCC – Allowable Range of Contract Cost.

BAC – Bids and Awards Committee.

Bid – A signed offer or proposal to undertake a contract submitted by a bidder in response to and in consonance with the requirements of the bidding documents. Also referred to as *Proposal* and *Tender*. (2016 revised IRR, Section 5[c])

Bidder – Refers to a contractor, manufacturer, supplier, distributor and/or consultant who submits a bid in response to the requirements of the Bidding Documents. (2016 revised IRR, Section 5[d])

Bidding Documents – The documents issued by the Procuring Entity as the bases for bids, furnishing all information necessary for a prospective bidder to prepare a bid for the Goods, Infrastructure Projects, and/or Consulting Services required by the Procuring Entity. (2016 revised IRR, Section 5[e])

BIR – Bureau of Internal Revenue.

BSP – Bangko Sentral ng Pilipinas.

CDA – Cooperative Development Authority.

Consulting Services – Refer to services for Infrastructure Projects and other types of projects or activities of the GOP requiring adequate external technical and professional expertise that are beyond the capability and/or capacity of the GOP to undertake such as, but not limited to: (i) advisory and review services; (ii) pre-investment or feasibility studies; (iii) design; (iv) construction supervision; (v) management and related services; and (vi) other technical services or special studies. (2016 revised IRR, Section 5[i])

Contract – Refers to the agreement entered into between the Procuring Entity and the Supplier or Manufacturer or Distributor or Service Provider for procurement of Goods and Services; Contractor for Procurement of Infrastructure Projects; or Consultant or Consulting Firm for Procurement of Consulting Services; as the case may be, as recorded in the Contract Form signed by the parties, including all attachments and appendices thereto and all documents incorporated by reference therein.

Contractor – is a natural or juridical entity whose proposal was accepted by the Procuring Entity and to whom the Contract to execute the Work was awarded. Contractor as used in these Bidding Documents may likewise refer to a supplier, distributor, manufacturer, or consultant.

CPI – Consumer Price Index.

DOLE – Department of Labor and Employment.

DTI – Department of Trade and Industry.

Foreign-funded Procurement or Foreign-Assisted Project – Refers to procurement whose funding source is from a foreign government, foreign or international financing institution as specified in the Treaty or International or Executive Agreement. (2016 revised IRR, Section 5[b]).

GFI – Government Financial Institution.

GOCC – Government-owned and/or –controlled corporation.

Goods – Refer to all items, supplies, materials and general support services, except Consulting Services and Infrastructure Projects, which may be needed in the transaction of public businesses or in the pursuit of any government undertaking, project or activity, whether in the nature of equipment, furniture, stationery, materials for construction, or personal property of any kind, including non-personal or contractual services such as the repair and maintenance of equipment and furniture, as well as trucking, hauling, janitorial, security, and related or analogous services, as well as procurement of materials and supplies provided by the Procuring Entity for such services. The term “related” or “analogous services” shall include, but is not limited to, lease or purchase of office space, media advertisements, health maintenance services, and other services essential to the operation of the Procuring Entity. (2016 revised IRR, Section 5[r])

GOP – Government of the Philippines.

Infrastructure Projects – Include the construction, improvement, rehabilitation, demolition, repair, restoration or maintenance of roads and bridges, railways, airports, seaports, communication facilities, civil works components of information technology projects, irrigation, flood control and drainage, water supply, sanitation, sewerage and solid waste management systems, shore protection, energy/power and electrification facilities, national buildings, school buildings, hospital buildings, and other related construction projects of the government. Also referred to as *civil works or works*. (2016 revised IRR, Section 5[u])

LGUs – Local Government Units.

NFCC – Net Financial Contracting Capacity.

NGA – National Government Agency.

PCAB – Philippine Contractors Accreditation Board.

PhilGEPS - Philippine Government Electronic Procurement System.

Procurement Project – refers to a specific or identified procurement covering goods, infrastructure projects or consulting services. A Procurement Project shall be described,

detailed, and scheduled in the Project Procurement Management Plan prepared by the agency which shall be consolidated in the procuring entity's Annual Procurement Plan. (GPPB Circular No. 06-2019 dated 17 July 2019)

PSA – Philippine Statistics Authority.

SEC – Securities and Exchange Commission.

SLCC – Single Largest Completed Contract.

UN – United Nations.

Section I. Invitation to Bid



**Invitation to Bid for
CONSTRUCTION OF GENDER-NEUTRAL TOILET AT ROMBLON
AIRPORT GAD
A3-POI-05-2025**

1. The *Civil Aviation Authority of the Philippines Area Center III*, through the *CAAP Corporate Operating Budget COB 2025* intends to apply the sum of **Two Million Six Hundred Ninety-Eight Thousand Eight Hundred Fifty Eight and 14/100 (P2,698,858.14)** being the Approved Budget for the Contract (ABC) to payments under the contract for **CONSTRUCTION OF GENDER-NEUTRAL TOILET AT ROMBLON AIRPORT GAD (A3-POI-05-2025)**. Bids received in excess of the ABC shall be automatically rejected at bid opening.
2. The *Civil Aviation Authority of the Philippines Area Center III* now invites bids for the above Procurement Project. Completion of the Works is required **One-Hundred Twenty (120) Calendar Days (inclusive of 3 rainy/unworkable days)**. Bidders should have completed a contract similar to the Project. The description of an eligible bidder is contained in the Bidding Documents, particularly, in Section II (Instructions to Bidders).
3. Bidding will be conducted through open competitive bidding procedures using non-discretionary “*pass/fail*” criterion as specified in the 2016 revised Implementing Rules and Regulations (IRR) of Republic Act (RA) No. 9184.
4. Interested bidders may obtain further information from the *Civil Aviation Authority of the Philippines Area Center III* and inspect the Bidding Documents at the address given below during *Monday to Friday, 8:00 am-5:00 pm, except for holidays*.
5. A complete set of Bidding Documents may be acquired by interested bidders on **October 24, 2025** from given address and website/s below upon payment of the applicable fee for the Bidding Documents, pursuant to the latest Guidelines issued by the GPPB, in the amount of **Php 5,000.00 excluding** 12% Value Added Tax. The Procuring Entity shall allow the bidder to present its proof of payment for the fees *in person, by facsimile, or through electronic means*.
6. The *Civil Aviation Authority of the Philippines Area Center III* will hold a **Pre-Bid Conference on October 31, 2025, 10:00am** at **BAC Conference Room, Civil Aviation Authority of the Philippines Regional Office Area Center III, Civil Aviation Complex, Clark Freeport Zone, Mabalacat Pampanga** and/or through

videoconferencing/webcasting *via Google Meet*, which shall be open to prospective bidders.

7. Bids must be duly received by the BAC Secretariat through manual submission at the office address as indicated below, on or before **November 14, 2025, 9:00am**. **Late bids shall not be accepted.**
8. All bids must be accompanied by a bid security in any of the acceptable forms and in the amount stated in **ITB** Clause 16.
9. Bid opening shall be on **November 14, 2025, 10:00am** at the given address below. Bids will be opened in the presence of the bidders' representatives who choose to attend the activity.
10. The *Civil Aviation Authority of the Philippines Area Center III* reserves the right to reject any and all bids, declare a failure of bidding, or not award the contract at any time prior to contract award in accordance with Sections 35.6 and 41 of the 2016 revised Implementing Rules and Regulations (IRR) of RA No. 9184, without thereby incurring any liability to the affected bidder or bidders.
11. For further information, please refer to:

MICHAEL LOUIE ANGELO I. RODRIGUEZ

BAC Secretariat Head

***Civil Aviation Authority of the Philippines Regional Office Area Center III,
Civil Aviation Complex, Clark Freeport Zone, Mabalacat Pampanga***

Email: bac_area3@caap.gov.ph

Tel. No.: (02)82464988 local 2258

12. You may visit the following websites:

For downloading of Bidding Documents:

1. *PhilGEPS website*
2. **www.caap.gov.ph**

October 23, 2025

Atty. ROAN JILL E. HABOC
Chairperson, Bids and Awards Committee
Area Center III

Section II. Instructions to Bidders

1. Scope of Bid

The Procuring Entity, *Civil Aviation Authority of the Philippines Area Center III* invites Bids for the *CONSTRUCTION OF GENDER-NEUTRAL TOILET AT ROMBLON AIRPORT GAD*, with Project Identification Number (*A3-POI-05-2025*).

The Procurement Project (referred to herein as “Project”) is for the construction of Works, as described in Section VI (Specifications).

2. Funding Information

2.1. The GOP through the source of funding as indicated below for *CY 2025* in the amount of *Two Million Six Hundred Ninety-Eight Thousand Eight Hundred Fifty Eight and 14/100 (P2,698,858.14)*.

2.2. The source of funding is the Corporate Operating Budget.

3. Bidding Requirements

The Bidding for the Project shall be governed by all the provisions of RA No. 9184 and its 2016 revised IRR, including its Generic Procurement Manual and associated policies, rules and regulations as the primary source thereof, while the herein clauses shall serve as the secondary source thereof.

Any amendments made to the IRR and other GPPB issuance shall be applicable only to the ongoing posting, advertisement, or invitation to bid by the BAC through the issuance of a supplemental or bid bulletin.

The Bidder, by the act of submitting its Bid, shall be deemed to have inspected the site, determined the general characteristics of the contracted Works and the conditions for this Project, such as the location and the nature of the work; (b) climatic conditions; (c) transportation facilities; (c) nature and condition of the terrain, geological conditions at the site communication facilities, requirements, location and availability of construction aggregates and other materials, labor, water, electric power and access roads; and (d) other factors that may affect the cost, duration and execution or implementation of the contract, project, or work and examine all instructions, forms, terms, and project requirements in the Bidding Documents.

4. Corrupt, Fraudulent, Collusive, Coercive, and Obstructive Practices

The Procuring Entity, as well as the Bidders and Contractors, shall observe the highest standard of ethics during the procurement and execution of the contract. They or through an agent shall not engage in corrupt, fraudulent, collusive, coercive, and obstructive practices defined under Annex “I” of the 2016 revised IRR of RA No. 9184 or other integrity violations in competing for the Project.

5. Eligible Bidders

- 5.1. Only Bids of Bidders found to be legally, technically, and financially capable will be evaluated.
- 5.2. The Bidder must have an experience of having completed a Single Largest Completed Contract (SLCC) that is similar to this Project, equivalent to at least fifty percent (50%) of the ABC adjusted, if necessary, by the Bidder to current prices using the PSA's CPI, except under conditions provided for in Section 23.4.2.4 of the 2016 revised IRR of RA No. 9184.

A contract is considered to be "similar" to the contract to be bid if it has the major categories of work stated in the **BDS**.
- 5.3. For Foreign-funded Procurement, the Procuring Entity and the foreign government/foreign or international financing institution may agree on another track record requirement, as specified in the Bidding Document prepared for this purpose.
- 5.4. The Bidders shall comply with the eligibility criteria under Section 23.4.2 of the 2016 IRR of RA No. 9184.

6. Origin of Associated Goods

There is no restriction on the origin of Goods other than those prohibited by a decision of the UN Security Council taken under Chapter VII of the Charter of the UN.

7. Subcontracts

The Procuring Entity has prescribed that Subcontracting is not allowed.

8. Pre-Bid Conference

The Procuring Entity will hold a pre-bid conference for this Project on the specified date and time as indicated in paragraph 6 of the **IB**.

9. Clarification and Amendment of Bidding Documents

Prospective bidders may request for clarification on and/or interpretation of any part of the Bidding Documents. Such requests must be in writing and received by the Procuring Entity, either at its given address or through electronic mail indicated in the **IB**, at least ten (10) calendar days before the deadline set for the submission and receipt of Bids.

10. Documents Comprising the Bid: Eligibility and Technical Components

- 10.1. The first envelope shall contain the eligibility and technical documents of the Bid as specified in **Section IX. Checklist of Technical and Financial Documents**.
- 10.2. If the eligibility requirements or statements, the bids, and all other documents for submission to the BAC are in foreign language other than English, it must be accompanied by a translation in English, which shall be authenticated by the appropriate Philippine foreign service establishment, post, or the equivalent office having jurisdiction over the foreign bidder's affairs in the Philippines. For Contracting Parties to the Apostille Convention, only the translated documents shall be authenticated through an Apostille pursuant to GPPB Resolution No. 13-2019 dated 23 May 2019. The English translation shall govern, for purposes of interpretation of the bid.
- 10.3. A valid special PCAB License in case of Joint Ventures, and registration for the type and cost of the contract for this Project. Any additional type of Contractor license or permit shall be indicated in the **BDS**.
- 10.4. A List of Contractor's key personnel (e.g., Project Manager, Project Engineers, Materials Engineers, and Foremen) assigned to the contract to be bid, with their complete qualification and experience data shall be provided. These key personnel must meet the required minimum years of experience set in the **BDS**.
- 10.5. A List of Contractor's major equipment units, which are owned, leased, and/or under purchase agreements, supported by proof of ownership, certification of availability of equipment from the equipment lessor/vendor for the duration of the project, as the case may be, must meet the minimum requirements for the contract set in the **BDS**.

11. Documents Comprising the Bid: Financial Component

- 11.1. The second bid envelope shall contain the financial documents for the Bid as specified in **Section IX. Checklist of Technical and Financial Documents**.
- 11.2. Any bid exceeding the ABC indicated in paragraph 1 of the **IB** shall not be accepted.
- 11.3. For Foreign-funded procurement, a ceiling may be applied to bid prices provided the conditions are met under Section 31.2 of the 2016 revised IRR of RA No. 9184.

12. Alternative Bids

Bidders shall submit offers that comply with the requirements of the Bidding Documents, including the basic technical design as indicated in the drawings and specifications. Unless there is a value engineering clause in the **BDS**, alternative Bids shall not be accepted.

13. Bid Prices

All bid prices for the given scope of work in the Project as awarded shall be considered as fixed prices, and therefore not subject to price escalation during contract implementation, except under extraordinary circumstances as determined by the NEDA and approved by the GPPB pursuant to the revised Guidelines for Contract Price Escalation guidelines.

14. Bid and Payment Currencies

14.1. Bid prices may be quoted in the local currency or tradeable currency accepted by the BSP at the discretion of the Bidder. However, for purposes of bid evaluation, bids denominated in foreign currencies shall be converted to Philippine currency based on the exchange rate as published in the BSP reference rate bulletin on the day of the bid opening.

14.2. Payment of the contract price shall be made in Philippine Pesos.

15. Bid Security

15.1. The Bidder shall submit a Bid Securing Declaration or any form of Bid Security in the amount indicated in the **BDS**, which shall be not less than the percentage of the ABC in accordance with the schedule in the **BDS**.

15.2. The Bid and bid security shall be valid until **One Hundred Twenty Days from the opening of Bids**. Any bid not accompanied by an acceptable bid security shall be rejected by the Procuring Entity as non-responsive.

16. Sealing and Marking of Bids

Each Bidder shall submit one copy of the first and second components of its Bid.

The Procuring Entity may request additional hard copies and/or electronic copies of the Bid. However, failure of the Bidders to comply with the said request shall not be a ground for disqualification.

If the Procuring Entity allows the submission of bids through online submission to the given website or any other electronic means, the Bidder shall submit an electronic copy of its Bid, which must be digitally signed. An electronic copy that cannot be opened or is corrupted shall be considered non-responsive and, thus, automatically disqualified.

17. Deadline for Submission of Bids

The Bidders shall submit on the specified date and time and either at its physical address or through online submission as indicated in paragraph 7 of the **IB**.

18. Opening and Preliminary Examination of Bids

18.1. The BAC shall open the Bids in public at the time, on the date, and at the place specified in paragraph 9 of the **IB**. The Bidders' representatives who are present shall sign a register evidencing their attendance. In case videoconferencing, web-casting or other similar technologies will be used, attendance of participants shall likewise be recorded by the BAC Secretariat.

In case the Bids cannot be opened as scheduled due to justifiable reasons, the rescheduling requirements under Section 29 of the 2016 revised IRR of RA No. 9184 shall prevail.

18.2. The preliminary examination of Bids shall be governed by Section 30 of the 2016 revised IRR of RA No. 9184.

19. Detailed Evaluation and Comparison of Bids

19.1. The Procuring Entity's BAC shall immediately conduct a detailed evaluation of all Bids rated "*passed*" using non-discretionary pass/fail criteria. The BAC shall consider the conditions in the evaluation of Bids under Section 32.2 of 2016 revised IRR of RA No. 9184.

19.2. If the Project allows partial bids, all Bids and combinations of Bids as indicated in the **BDS** shall be received by the same deadline and opened and evaluated simultaneously so as to determine the Bid or combination of Bids offering the lowest calculated cost to the Procuring Entity. Bid Security as required by **ITB** Clause 15 shall be submitted for each contract (lot) separately.

19.3. In all cases, the NFCC computation pursuant to Section 23.4.2.6 of the 2016 revised IRR of RA No. 9184 must be sufficient for the total of the ABCs for all the lots participated in by the prospective Bidder.

20. Post Qualification

Within a non-extendable period of five (5) calendar days from receipt by the Bidder of the notice from the BAC that it submitted the Lowest Calculated Bid, the Bidder shall submit its latest income and business tax returns filed and paid through the BIR Electronic Filing and Payment System (eFPS), and other appropriate licenses and permits required by law and stated in the **BDS**.

21. Signing of the Contract

The documents required in Section 37.2 of the 2016 revised IRR of RA No. 9184 shall form part of the Contract. Additional Contract documents are indicated in the **BDS**.

Section III. Bid Data Sheet

Bid Data Sheet

ITB Clause					
5.2	<p>A. For this purpose, contracts similar to the Project refer to contracts which have the same major categories of work, which shall be:</p> <table border="1" style="width: 100%; margin: 10px 0;"> <tr> <td style="width: 60%;">Category</td> <td>ABC</td> </tr> <tr> <td>CONSTRUCTION OF GENDER-NEUTRAL TOILET AT ROMBLON AIRPORT GAD</td> <td>Php 2,698,858.14</td> </tr> </table> <p>B. The statement of SLCC shall be accompanied by a Certificate of Final Acceptance issued by the owner, or a final rating of at least “Satisfactory in the Constructors Performance Evaluation System (CPES). In the case of contracts with the private sector, an equivalent document shall be submitted. (Section 23.4.2.5 of the Revised IRR of Republic Act No. 9184)</p> <p>C. The bidder’s SLCC similar to the contract to be bid should have been completed within the last five (5) years prior to the deadline for the submission and receipt of bids.</p>	Category	ABC	CONSTRUCTION OF GENDER-NEUTRAL TOILET AT ROMBLON AIRPORT GAD	Php 2,698,858.14
Category	ABC				
CONSTRUCTION OF GENDER-NEUTRAL TOILET AT ROMBLON AIRPORT GAD	Php 2,698,858.14				
10.1	<p>Bidder shall submit all eligibility and technical documents as specified in Section IX. Checklist of Technical and Financial Documents:</p> <p>Class “A” Documents Legal Documents</p> <p>Valid PhilGEPS Registration Certificate (Platinum Membership) (all pages) in accordance with Section 8.5.2 of the IRR;</p> <p>Technical Documents</p> <p>Statement of the prospective bidder of all its ongoing government and private contracts, including contracts awarded but not yet started, if any, whether similar or not similar in nature and complexity to the contract to be bid. (Annex “A” Form 1); and</p> <p>Statement of the bidder’s Single Largest Completed Contract (SLCC) similar to the contract to be bid, except under conditions provided under the rules. (Annex “A” Form 2); and</p> <p>1. The statement of SLCC shall be accompanied by a Certificate of Final Acceptance issued by the owner, or a final rating of at least Satisfactory in the Constructors Performance Evaluation System (CPES). In the case of contracts with the private sector, an equivalent document shall be submitted. (Section 23.4.2.5 of the Revised IRR of Republic Act No. 9184).; and</p>				

Special PCAB License in case of Joint Ventures and registration for the type and cost of the contract to be bid;
Original copy of Bid Security. If in the form of a Surety Bond, submit also a certification issued by the Insurance Commission or original copy of Notarized Bid Securing Declaration (Annex "B" Form 1); and

Project Requirements, which shall include the following:

Organizational chart for the contract to be bid (Annex "B" Form 2); and

Original of duly signed list of contractor's key personnel (e.g., Project Manager, Project Engineers, Materials Engineers, and Foremen), to be assigned to the contract to be bid, with their complete qualification and experience data (Annex "B" Form 3, 4a, 4b, & 4c); and

Original of duly signed list of contractor's major equipment units, which are owned, leased, and/or under purchase agreements, supported by proof of ownership or certification of availability of equipment from the equipment lessor/vendor for the duration of the project, as the case may be (Annex "B" Form 5); and

Original duly signed Omnibus Sworn Statement (OSS) and if applicable, Original Notarized Secretary's Certificate in case of a corporation, partnership, or cooperative; or Original Special Power of Attorney of all members of the joint venture giving full power and authority to its officer to sign the OSS and do acts to represent the Bidder (Annex "B" Form 6)

This shall include all of the following documents as attachment to the Omnibus Sworn Statement:

Certification, under oath, attesting that they have no pending case(s) against the Government, in addition to the eligibility requirements as prescribe under the 2016 Revised Implementing Rules and Regulation (R-IRR) of RA No. 9184; and

Bid Bulletins (if applicable); and

Financial Documents

The prospective bidder's computation of Net Financial Contracting Capacity (NFCC).

Class "B" Documents

If applicable, duly signed joint venture agreement (JVA) in accordance with RA No. 4566 and its IRR in case the joint venture is already in existence; or duly notarized statements from all the potential joint venture partners

	<p>stating that they will enter into and abide by the provisions of the JVA in the instance that the bid is successful.</p> <p>II. FINANCIAL COMPONENT ENVELOPE</p> <p>Original of duly signed and accomplished Financial Bid Form; and</p> <p>Other documentary requirements under RA No. 9184</p> <p>Original of duly signed Bid Prices in the Bill of Quantities (Annex "C" Form 1);</p> <p>Summary of Bid Proposal (Annex "C" Form 2);</p> <p>Bill of Materials & Cost Estimates (Annex "C" Form 3);</p> <p>Summary Sheet indicating the Unit Prices of Construction Materials (Annex "C" Form 4);</p> <p>Summary Sheet indicating Unit Prices of Labor (Annex "C" Form 5);</p> <p>Summary Sheet indicating the Unit Prices of Equipment (Annex "C" Form 6); and</p> <p>Cash Flow by Quarter and Payment Schedule (Annex "C" Form 7).</p> <p>Bids not complying with the above instruction shall be disqualified.</p>												
10.3	PCAB License General Engineering Small B - Category C&D in accordance to PCAB Board Resolution No. 201 Series of 2017												
10.4	<p>The key personnel must meet the required minimum years of experience set below:</p> <table border="1" data-bbox="368 1400 1418 1995"> <thead> <tr> <th data-bbox="368 1444 804 1525">KEY PERSONNEL</th> <th data-bbox="804 1444 1106 1525">GENERAL EXPERIENCE</th> <th data-bbox="1106 1444 1418 1525">RELEVANT EXPERIENCE</th> </tr> </thead> <tbody> <tr> <td data-bbox="368 1525 804 1727">1 - Project (Civil) Engineer</td> <td data-bbox="804 1525 1106 1727">Five (5) years in General Engineering</td> <td data-bbox="1106 1525 1418 1727">Three (3) years in <i>Building Construction/Improvement/Rehabilitation/Repair</i></td> </tr> <tr> <td data-bbox="368 1727 804 1928">1 – Construction Foreman</td> <td data-bbox="804 1727 1106 1928">Five (5) years relevant work experience</td> <td data-bbox="1106 1727 1418 1928">Three (3) years in <i>Building Construction/Improvement/Rehabilitation/Repair</i></td> </tr> <tr> <td data-bbox="368 1928 804 1995">1 - Master Electrician</td> <td data-bbox="804 1928 1106 1995">Three (3) years relevant work</td> <td data-bbox="1106 1928 1418 1995"></td> </tr> </tbody> </table>	KEY PERSONNEL	GENERAL EXPERIENCE	RELEVANT EXPERIENCE	1 - Project (Civil) Engineer	Five (5) years in General Engineering	Three (3) years in <i>Building Construction/Improvement/Rehabilitation/Repair</i>	1 – Construction Foreman	Five (5) years relevant work experience	Three (3) years in <i>Building Construction/Improvement/Rehabilitation/Repair</i>	1 - Master Electrician	Three (3) years relevant work	
KEY PERSONNEL	GENERAL EXPERIENCE	RELEVANT EXPERIENCE											
1 - Project (Civil) Engineer	Five (5) years in General Engineering	Three (3) years in <i>Building Construction/Improvement/Rehabilitation/Repair</i>											
1 – Construction Foreman	Five (5) years relevant work experience	Three (3) years in <i>Building Construction/Improvement/Rehabilitation/Repair</i>											
1 - Master Electrician	Three (3) years relevant work												

	<table border="1"> <tr> <td></td> <td>experience</td> <td></td> </tr> <tr> <td>1 - Master Plumber</td> <td>Three (3) years relevant work experience</td> <td></td> </tr> <tr> <td>1 - Safety Engineer</td> <td>Two (2) years of relevant experience</td> <td></td> </tr> </table>		experience		1 - Master Plumber	Three (3) years relevant work experience		1 - Safety Engineer	Two (2) years of relevant experience													
	experience																					
1 - Master Plumber	Three (3) years relevant work experience																					
1 - Safety Engineer	Two (2) years of relevant experience																					
10.5	<p>The minimum major equipment requirements are the following:</p> <table border="1"> <thead> <tr> <th><u>Equipment</u></th> <th><u>Capacity</u></th> <th><u>Number of Units</u></th> </tr> </thead> <tbody> <tr> <td>One-Bagger Concrete Mixer</td> <td></td> <td>One (1)</td> </tr> <tr> <td>Concrete Vibrator</td> <td></td> <td>One (1)</td> </tr> <tr> <td>Welding Machine, 200Amp, 51-100kw Generator Set,</td> <td></td> <td>One (1)</td> </tr> <tr> <td>Oxy-Acetylene Cutting Torch/Welding Outfit,</td> <td></td> <td>One (1)</td> </tr> <tr> <td>Tamping Rammer, 16kN</td> <td></td> <td>One (1)</td> </tr> <tr> <td>Air compressor and Jackhammer</td> <td></td> <td>One (1)</td> </tr> </tbody> </table> <p>Use Annex “B” Form 5 as per checklist</p>	<u>Equipment</u>	<u>Capacity</u>	<u>Number of Units</u>	One-Bagger Concrete Mixer		One (1)	Concrete Vibrator		One (1)	Welding Machine, 200Amp, 51-100kw Generator Set,		One (1)	Oxy-Acetylene Cutting Torch/Welding Outfit,		One (1)	Tamping Rammer, 16kN		One (1)	Air compressor and Jackhammer		One (1)
<u>Equipment</u>	<u>Capacity</u>	<u>Number of Units</u>																				
One-Bagger Concrete Mixer		One (1)																				
Concrete Vibrator		One (1)																				
Welding Machine, 200Amp, 51-100kw Generator Set,		One (1)																				
Oxy-Acetylene Cutting Torch/Welding Outfit,		One (1)																				
Tamping Rammer, 16kN		One (1)																				
Air compressor and Jackhammer		One (1)																				
15.1	<p>The bid security shall be in the form of a Bid Securing Declaration or any of the following forms and amounts:</p> <ol style="list-style-type: none"> The amount of not less than <i>P53,977.16 (2% of ABC)</i>, if bid security is in cash, cashier’s/manager’s check, bank draft/guarantee or irrevocable letter of credit; The amount of not less than <i>P134,942.91 (5% of ABC)</i> if bid security is in Surety Bond. 																					
16	<p>1. Each and every page thereof shall be initialed/signed by the duly authorized representative/s of the Bidder.</p> <p>Submitted Eligibility, Technical and Financial documents shall be properly marked with index tabs (ear tab) and must be sequentially paginated in accurate order in the form i.e. “page 3 of 100”. Page number of last page of the document (per envelope basis). Pagination should be sequential based on the entire span of the whole documents inside the envelope.</p> <p>Bids not complying with the above instructions shall be automatically disqualified.</p> <p>2. Each Bidder shall submit one copy of the first and second components of its bid.</p>																					
20	<p>The bidder with the Lowest Calculated Bid (LCB) that complies with and is responsive to all the requirements and conditions shall secure:</p> <ol style="list-style-type: none"> Certificate under oath attesting that they have no pending case(s) 																					

	<p>against the Government, in addition to the eligibility requirements for bidders as prescribed under the revised IRR for RA9184;</p> <ul style="list-style-type: none"> b. Legal Clearance to be issued by the CAAP Enforcement and Legal Service with respect to the non-pendency of any cases of prospective bidders against the Authority; and c. Certificate of Site Inspection duly signed by Ms. Nonie L. Largueza, OIC, Romblon Airport, is required to be submitted. This shall include all of the following documents as attachment to the Certificate of Site Inspection and shall form part of the bidder's technical documents: <ul style="list-style-type: none"> i. Copy of company ID of the person who conducted the site inspection; ii. Copy of the airport/facility visitor's logbook; and iii. Picture of the proposed site including the personnel who conducted the site inspection together with the Airport Manager/Officer in Charge or his duly authorized representative.
21	<p>The following relevant project documents are required to be submitted by the successful bidder who submitted the LCRB as part of the Contract Agreement during its signing:</p> <ul style="list-style-type: none"> a) Construction Schedule b) Bar Chart & S-curve c) PERT/CPM Network Diagram d) Manpower Schedule e) Construction Methods f) Equipment Utilization Schedule <p>Construction safety & health programs approved by the Department of Labor & Employment (CONSTRUCTION OF GENDER-NEUTRAL TOILET AT ROMBLON AIRPORT GAD)</p>

Section IV. General Conditions of Contract

1. **Scope of Contract**

This Contract shall include all such items, although not specifically mentioned, that can be reasonably inferred as being required for its completion as if such items were expressly mentioned herein. All the provisions of RA No. 9184 and its 2016 revised IRR, including the Generic Procurement Manual, and associated issuance, constitute the primary source for the terms and conditions of the Contract, and thus, applicable in contract implementation. Herein clauses shall serve as the secondary source for the terms and conditions of the Contract.

This is without prejudice to Sections 74.1 and 74.2 of the 2016 revised IRR of RA No. 9184 allowing the GPPB to amend the IRR, which shall be applied to all procurement activities, the advertisement, posting, or invitation of which were issued after the effectivity of the said amendment.

2. **Sectional Completion of Works**

If sectional completion is specified in the **Special Conditions of Contract (SCC)**, references in the Conditions of Contract to the Works, the Completion Date, and the Intended Completion Date shall apply to any Section of the Works (other than references to the Completion Date and Intended Completion Date for the whole of the Works).

3. **Possession of Site**

3.1 The Procuring Entity shall give possession of all or parts of the Site to the Contractor based on the schedule of delivery indicated in the **SCC**, which corresponds to the execution of the Works. If the Contractor suffers delay or incurs cost from failure on the part of the Procuring Entity to give possession in accordance with the terms of this clause, the Procuring Entity's Representative shall give the Contractor a Contract Time Extension and certify such sum as fair to cover the cost incurred, which sum shall be paid by Procuring Entity.

3.2 If possession of a portion is not given by the above date, the Procuring Entity will be deemed to have delayed the start of the relevant activities. The resulting adjustments in contract time to address such delay may be addressed through contract extension provided under Annex "E" of the 2016 revised IRR of RA No. 9184.

4. **The Contractor's Obligations**

The Contractor shall employ the key personnel named in the Schedule of Key Personnel indicating their designation, in accordance with **ITB** Clause 10.3 and specified in the **BDS**, to carry out the supervision of the Works.

The Procuring Entity will approve any proposed replacement of key personnel only if their relevant qualifications and abilities are equal to or better than those of the personnel listed in the Schedule.

5. Performance Security

- 5.1. Within ten (10) calendar days from receipt of the Notice of Award from the Procuring Entity but in no case later than the signing of the contract by both parties, the successful Bidder shall furnish the performance security in any of the forms prescribed in Section 39 of the 2016 revised IRR.
- 5.2. The Contractor, by entering into the Contract with the Procuring Entity, acknowledges the right of the Procuring Entity to institute action pursuant to RA No. 3688 against any subcontractor be they an individual, firm, partnership, corporation, or association supplying the Contractor with labor, materials and/or equipment for the performance of this Contract.

6. Site Investigation Reports

The Contractor, in preparing the Bid, shall rely on any Site Investigation Reports referred to in the **SCC** supplemented by any information obtained by the Contractor.

7. Warranty

- 7.1. In case the Contractor fails to undertake the repair works under Section 62.2.2 of the 2016 revised IRR, the Procuring Entity shall forfeit its performance security, subject its property(ies) to attachment or garnishment proceedings, and perpetually disqualify it from participating in any public bidding. All payables of the GOP in his favor shall be offset to recover the costs.
- 7.2. The warranty against Structural Defects/Failures, except that occasioned-on force majeure, shall cover the period from the date of issuance of the Certificate of Final Acceptance by the Procuring Entity. Specific duration of the warranty is found in the **SCC**.

8. Liability of the Contractor

Subject to additional provisions, if any, set forth in the **SCC**, the Contractor's liability under this Contract shall be as provided by the laws of the Republic of the Philippines.

If the Contractor is a joint venture, all partners to the joint venture shall be jointly and severally liable to the Procuring Entity.

9. Termination for Other Causes

Contract termination shall be initiated in case it is determined *prima facie* by the Procuring Entity that the Contractor has engaged, before, or during the implementation of the contract, in unlawful deeds and behaviors relative to contract acquisition and implementation, such as, but not limited to corrupt, fraudulent, collusive, coercive, and obstructive practices as stated in **ITB Clause 4**.

10. Dayworks

Subject to the guidelines on Variation Order in Annex “E” of the 2016 revised IRR of RA No. 9184, and if applicable as indicated in the **SCC**, the Dayworks rates in the Contractor’s Bid shall be used for small additional amounts of work only when the Procuring Entity’s Representative has given written instructions in advance for additional work to be paid for in that way.

11. Program of Work

11.1. The Contractor shall submit to the Procuring Entity’s Representative for approval the said Program of Work showing the general methods, arrangements, order, and timing for all the activities in the Works. The submissions of the Program of Work are indicated in the **SCC**.

11.2. The Contractor shall submit to the Procuring Entity’s Representative for approval an updated Program of Work at intervals no longer than the period stated in the **SCC**. If the Contractor does not submit an updated Program of Work within this period, the Procuring Entity’s Representative may withhold the amount stated in the **SCC** from the next payment certificate and continue to withhold this amount until the next payment after the date on which the overdue Program of Work has been submitted.

12. Instructions, Inspections and Audits

The Contractor shall permit the GOP or the Procuring Entity to inspect the Contractor’s accounts and records relating to the performance of the Contractor and to have them audited by auditors of the GOP or the Procuring Entity, as may be required.

13. Advance Payment

The Procuring Entity shall, upon a written request of the Contractor which shall be submitted as a Contract document, make an advance payment to the Contractor in an amount not exceeding fifteen percent (15%) of the total contract price, to be made in lump sum, or at the most two installments according to a schedule specified in the **SCC**, subject to the requirements in Annex “E” of the 2016 revised IRR of RA No. 9184.

14. Progress Payments

The Contractor may submit a request for payment for Work accomplished. Such requests for payment shall be verified and certified by the Procuring Entity's Representative/Project Engineer. Except as otherwise stipulated in the **SCC**, materials and equipment delivered on the site but not completely put in place shall not be included for payment.

15. Operating and Maintenance Manuals

- 15.1. If required, the Contractor will provide "as built" Drawings and/or operating and maintenance manuals as specified in the **SCC**.
- 15.2. If the Contractor does not provide the Drawings and/or manuals by the dates stated above, or they do not receive the Procuring Entity's Representative's approval, the Procuring Entity's Representative may withhold the amount stated in the **SCC** from payments due to the Contractor.

Section V. Special Conditions of Contract

Special Conditions of Contract

GCC Clause	
2	The Intended Completion Date <i>One Hundred Twenty (120) Calendar Days (inclusive of 3 rainy/unworkable days).</i>
4.1	The CIVIL AVIATION AUTHORITY OF THE PHILIPPINES – Romblon Airport shall give possession of all parts of the Site to the Contractor upon receipt of the Notice of Award (NOA).
7.2	Warranty In case of permanent structures, such as buildings of types 4 and 5 as classified under the National Building Code of the Philippines and other structures made of steel, iron, or concrete which comply with relevant structural codes (e.g., DPWH Standard Specifications), such as, but not limited to, steel/concrete bridges, flyovers, aircraft movement areas, ports, dams, tunnels, filtration and treatment plants, sewerage systems, power plants, transmission and communication towers, railway system, and other similar permanent structures: Fifteen (15) years.
10	Dayworks are applicable at the rate shown in the Contractor’s original Bid.
11.1	The Contractor shall submit the Program of Work to the Procuring Entity’s Implementation Unit, within ten (10) days from receipt of the Notice of Award. Subject for approval of Implementation Unit.
11.2	The amount to be withheld for late submission of an updated Program of Work is two percent (2%) of the Contract Price.
13	Advance payment is not applicable.
14	Materials and equipment delivered on the site but not completely put in place shall not be included for payment.
15.1	The date by which “as built” drawings are required within fifteen (15) calendar days after project completion. Subject for approval of Implementing Unit.
15.2	The amount to be withheld for failing to produce “as built” drawings and/or operating and maintenance manuals by the date required is two percent (2%) of the Contract Price.

Section VI. Specifications

Name of Project : **Construction of Gender Neutral Toilet GAD**
Location : **Romblon Airport, Tugdan, Alcantara Romblon**
Duration : **One Hundred (100) Calendar Days**
Source of Funds : **Notice of Approved Operating Budget (NAOB)**

SCOPE OF WORK

I. GENERAL

The works to be accomplished by the successful bidder consist of furnishing, supervision, labor, materials, supplies, tools and equipment to complete the Construction of Gender Neutral Toilet at Romblon AP GAD.

LOCATION OF PROJECT

The Contract to be bid is located at Romblon Airport, Tugdan, Alcantara, Romblon.

III .SCOPE OF WORK

The details of work are at best enumerated below, but be noted that the Contract includes all works and services although not specifically mentioned herein, but are needed to fully complete the Project.

The project covers the supply for the Construction of Gender Neutral Toilet at Romblon AP GAD with the following scope of works which shall be done in accordance with the approved plans, specifications and provision of contract to wit: (Work shall include but is not limited to the following);

1. Civil/Structural Works

a. Site Works

The work includes all materials, labor, and equipment for site works inclusive of the excavation and demolition of existing pavement and earth prior to the construction of footings, disposal of excavated materials unsuitable for backfilling purposes, application of compacted gravel bedding for footings, provision of suitable backfilling materials composed of common borrow and backfill inspected, analyzed and approved by the Project-in-Charge designated by the CAAP.

b. Concrete Works

The work includes labor, materials and tools/equipment for the construction of all concrete works inclusive of the fabrication of formworks, fabrication and

installation of reinforcing bars for column and wall footings, columns, beams, slab as specified on the approved plans. The reinforcing steel bars must be tested and shall pass the minimum test requirements for bending, tension and chemical analysis; the concrete must be tested and shall pass the minimum testing requirement for compression on contractor's expense. (Materials to be used and workmanship must be approved by the Project-in-Charge designated by the CAAP).

c. Masonry Works

The work includes labor, materials, and tools for the laying of 150mm concrete hollow blocks together with the mortar, plastering and installation of vertical and horizontal reinforcing bars. Concrete hollow blocks shall pass the minimum testing requirement for compression of non-load bearing hollow blocks at contractor's expense. (Materials to be used and workmanship must be approved by the Project-in-Charge designated by the CAAP).

d. Steel Works

The work includes materials, labor and tools/equipment needed to accomplish the steel works inclusive of fabrication and installation of louver, steel trusses and purlins in accordance with the approved plans. The contractor shall provide in his own expense the scaffoldings to be used by the workers (Materials to be used and workmanship must be approved by the Project-in-Charge designated by the CAAP)).

e. Roofing Works

The work includes materials, labor and tools needed to complete the roofing works inclusive of the installation of GA#26 pre-painted long span rib type roofing sheet and pre-painted GA#24 GI flashing. (Materials to be used and workmanship must be approved by the Project-in-Charge designated by the CAAP).

f. Septic Tank and Catch Basin

The work includes materials, labor and tools to complete the four units of catch basin as well as the septic tank as indicated on the approved plans. (Materials to be used and workmanship must be approved by the Project-in-Charge designated by the CAAP).

2. Architectural Works

a. Tile and Stone Works

The work includes labor, materials and tools for the completion of tile and stone works inclusive of 600mm x 600mm matt finish tiles for flooring, 300mm x 600mm homogeneous wall tiles, 200mm x 600mm trim tiles, 75mm x 100mm clay bricks for the facade. (Materials to be used and workmanship must be approved by the Project-in-Charge designated by the CAAP).

b. Carpentry Works

The work includes labor, materials and tools to complete the fabrication and installation of ceiling frame which is consist of wall angles, carrying channel, metal furring, suspension rod where the 4.5mm thick fiber cement boards will be installed. (Materials to be used and workmanship must be approved by the Project-in-Charge designated by the CAAP).

c. Painting Works

The work includes labor, materials and tools to complete the painting of ceiling using flat latex, painting of bullnose, parapet and exterior walls using elastomeric paint, interior walls, painting of tubular trellis and louver using enamel epoxy paint as indicated on Program of Works. (Materials to be used and workmanship must be approved by the Project-in-Charge designated by the CAAP).

d. Doors and Windows

The work includes labor, materials and tools to complete the installation of doors and windows together with its accessories as indicated in the Program of Works. (Materials to be used and workmanship must be approved by the Project-inCharge designated by the CAAP).

3. Electrical Works

The work includes labor, materials and performance of all operations to complete the installation of the following: lighting and power conduits and fittings, wires and cables, electrical wiring devices, lighting fixtures, boxes, panel board/circuit breaker , feeder conductors, conduits and fittings, ventilation and termination accessories as indicated on plans. (Materials to be used and workmanship must be approved by the Project-in-Charge designated by the CAAP).

4. Plumbing and Sanitary Works

The work includes labor, materials and performance of all operations to complete the installation of plumbing fixtures and accessories, sewer line, water line and storm drainage system as indicated on plans. (Materials to be used and workmanship must be approved by the Project-in-Charge designated by the CAAP).

5. Miscellaneous Structure (Project Information Sign)

The work includes labor, materials and performance of all operations to complete the installation of plumbing fixtures and accessories, sewer line, water line and storm drainage system as indicated on plans. (Materials to be used and workmanship must be approved by the Project-in-Charge designated by the CAAP).

In accordance with the COA Circular No. 2013-004 dated January 30, 2013. To promote good governance through transparency and accountability, infrastructure projects shall have a tarpaulin signboard, suitably framed for outdoor display at the project location, and shall have the following specifications:

- a. White, 8ft by 8ft in size
- b. Resolution: 70 dpi
- c. Font: Helvetica
- d. Font Size: Main Information- 3"; Sub Information-1"
- e. Font Color: Black"

In compliance with the Proclamation Np. 486, S.2024 project billboards shall bear the message, 'This is Where Your Taxes Go', to be placed above or below the project billboards. The design and format of the tarpaulin shall have the following specifications:

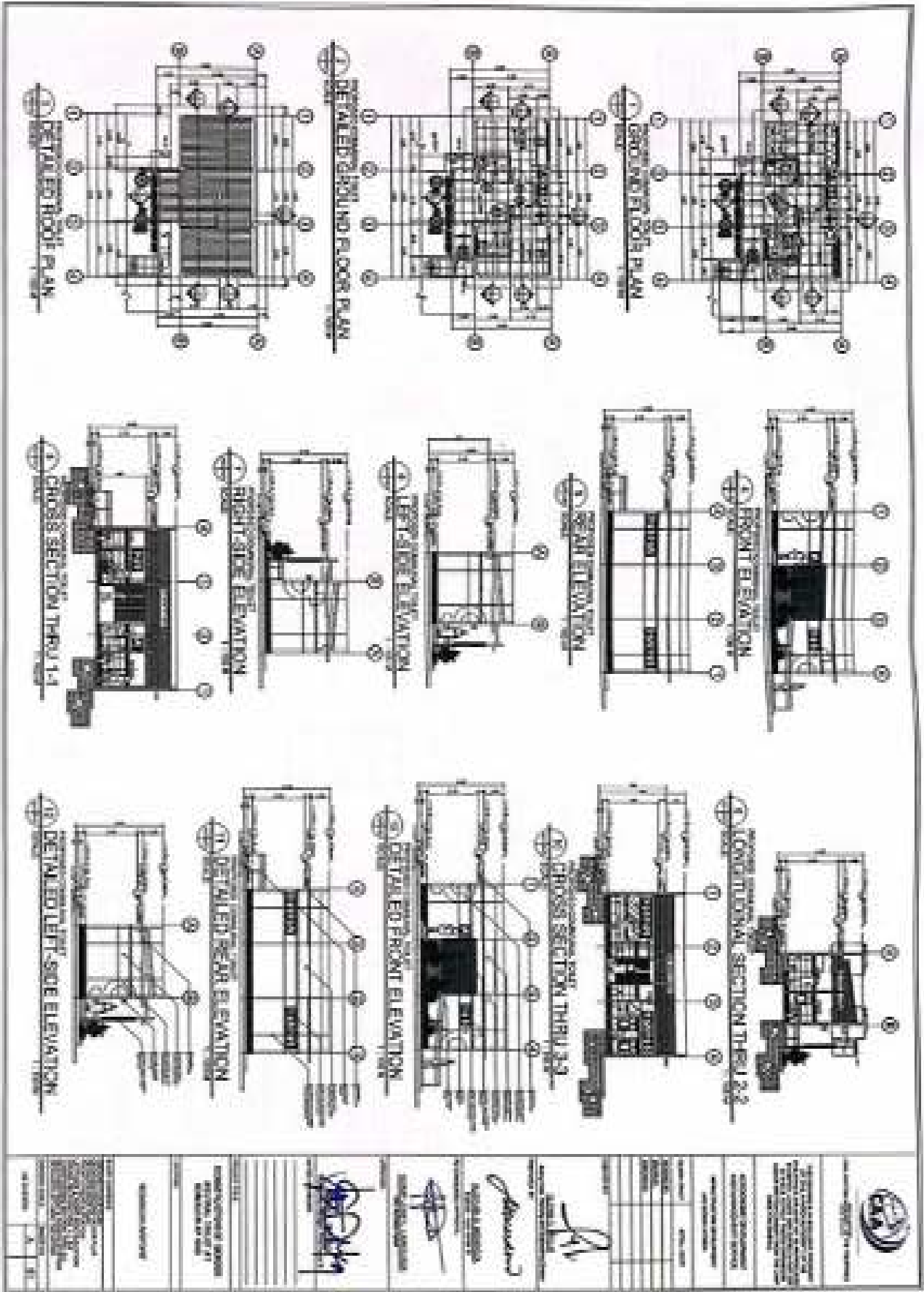
- a. White, 8ft by 1 ft in size
- b. Resolution: 70 dpi
- c. Font: Helvetica
- d. Font Size: Main Information- 6"
- e. Font Color: Black"

All scope of work to this item must be according to plan and specifications and approved by the Engineer-In-Charge. Quality and types of materials must conform and to be approved by the Project Engineer assigned by CAAP.

The contractor shall be responsible in providing personal protective equipment (PPE) for staffs and workers, and Safety Inspectors or Safety Engineers on site while construction is ongoing. Regular safety reports should be reported.

The contractor shall be responsible for all laboratory, material testing, environmental compliance certificate (ECC), building and safety permits and survey instruments necessary in the project implementation. All expenses shall be incorporated in the contractor's overhead cost and shall not be considered as pay item.

Section VII. Drawings



Section VIII. Bill of Quantities

APPROVED BUDGET FOR THE CONTRACT OF

CONSTRUCTION OF GENDER-NEUTRAL TOILET AT ROMBLON NAP GAD

ROMBLON AIRPORT

ITEM NO.	DESCRIPTION OF WORK	QUANTITY	UNIT	ESTIMATED DIRECT COST	MARK-UP PERCENT			TOTAL MARK-UP	VAT	TOTAL INDIRECT COST	TOTAL COST	UNIT COST
					PCM	Profit	%					
(1)	(2)	(3)	(4)	(5)	(6)	(7)	(8)	(9) (5) x (4)	(10) 5%/(5) + (9)	(11) (9) + (10)	(12) (5) + (11)	(13) (20/13)
1.00	Civil/Structural Works											
1.01	Site Works	61.20	cumt.		15.0%	10.0%	25.0%					
1.02	Concrete Works	24.85	cumt.		15.0%	10.0%	25.0%					
1.03	Masonry Works	102.24	sqm.		15.0%	10.0%	25.0%					
1.04	Steel Works Roofing works (Iron Roof)	1,124.59	kgs		15.0%	10.0%	25.0%					
1.05	Septic Tank & Conch Basin	110.08	sqm.		15.0%	10.0%	25.0%					
1.06	Architectural Works	9.03	sqm.		15.0%	10.0%	25.0%					
2.00	Architectural Works											
2.01	Tile & Stone Works	225.04	sqm.		15.0%	10.0%	25.0%					
2.02	Certery Works	38.56	sqm.		15.0%	10.0%	25.0%					
2.03	Painting Works	185.86	sqm.		15.0%	10.0%	25.0%					
2.04	Doors and Windows	8.03	sqb		15.0%	10.0%	25.0%					

3.00	Electrical Works																		
3.01	Lighting and Power Conduits and Fittings	125.80	L.M.		15.2%	10.2%	25.0%												
3.02	Wires & Cables	3.00	rolls		15.2%	10.2%	25.0%												
3.03	Electrical Wiring Devices	11.00	sets		15.2%	10.2%	25.0%												
3.04	Lighting Fixtures	25.00	sets		15.2%	10.2%	25.0%												
3.05	Boxes and Pullboxes Panelboard/Circuit Breaker	37.00	PCS		15.2%	10.2%	25.0%												
3.06		1.00	assy		15.2%	10.2%	25.0%												
3.07	Feeder Conductors	500.80	L.M.		15.2%	10.2%	25.0%												
3.08	Feeder Conduits and Fittings	126.80	L.M.		15.2%	10.2%	25.0%												
3.09	Ventilation	5.00	sets		15.2%	10.2%	25.0%												
3.10	Termination Accessories	1.00	set		15.2%	10.2%	25.0%												
4.00	Plumbing Works																		
4.01	Fixtures and Accessories	46.00	PCS.		15.2%	10.2%	25.0%												
4.02	Sewer Line System	89.00	L.M.		15.2%	10.2%	25.0%												
4.03	Waterline System	81.00	L.M.		15.2%	10.2%	25.0%												
4.04	Storm Drainage System Miscellaneous Structure	59.00	L.M.		15.2%	10.2%	25.0%												
5.00	Structure (Project Information Sign)																		
5.01	Signboard and Frames	1.00	LOT		15.2%	10.2%	25.0%												
TOTAL AMOUNT																			

NAME OF PROJECT :		CONSTRUCTION OF GENDER NEUTRAL TOILET			
DESCRIPTION :		Construction of Gender Neutral Toilet at Romblon AP GAD			
LOCATION :		Romblon Airport, Alcantara, Romblon			
SUBJECT :		Bill of Materials & Cost Estimate		QUANTITY	UNIT
				1.00	lot
1.00	CIVIL/STRUCTURAL WORKS				
1.01	Site Works	61.20	cu.m.		
A	Materials				
	Demolition of Existing Ground Slab	5.20	cu.m.	---	---
	Excavation	16.00	cu.m.	---	---
	Gravel, G1	2.00	cu.m.		
	Backfill	26.00	cu.m.	---	---
	Common Borrow (Embankment, delivered on site)	12.00	cu.m.		
			Material cost	
B	Labor	QTY.	DUR. (DAYS)	RATE/DAY	
	Construction Foreman	1.00	10		
	Common Worker	3.00	10		
			Labor cost	
C	Equipment	QTY.	DUR. (DAYS)	RATE/DAY	
	Air Compressor and Jackhammer	1.00	1		
	Tamping Rammer, 16kN	1.00	2		
			Equipment Cost	
A	Site Works Material Cost				
B	Site Works Labor Cost				
C	Site Works Equipment Cost				
D	Site Works Direct Cost				
INDIRECT COSTS					
1. OCM (15% of TDC) 15.0% of Estimated Direct Cost					
2. CONTRACTOR'S PROFIT (10% of TDC) 10.0% of Estimated Direct Cost					
E. TOTAL OCM & CONTRACTOR'S PROFIT 25.0% of D					
F. VALUE ADDED TAX, (VAT) 5.0% of (D + E)					
G. TOTAL ESTIMATED INDIRECT COST (E + F), P					
H. TOTAL ESTIMATED UNIT INDIRECT COST (G / Quantity), P/Unit					
TOTAL ESTIMATED COST (D + G), P					
TOTAL ESTIMATED UNIT COST (Total Estimated Cost / Quantity), P/Unit					

1.02	Concrete Works		14.36	cu.m.		
A	Materials					
		40kg Portland Cement	139.00	bags		
		Sand	8.00	cu.m.		
		3/4" Gravel	15.00	cu.m.		
		16mm DSRS, 6m	92.00	pcs		
		12mm DSRS, 6m	22.00	pcs		
		10mm DSRS, 6m	214.00	pcs		
		#16 GI Tie Wire	31.00	lbs		
		1/2" x 4' x 8' Ordinary Plywood	34.00	pcs		
		Form Lumber (Coco)	336.00	bd.ft		
		Associated CWN	7.00	lbs		
				Material Cost	-----	
B	Labor		QTY.	DUR. (DAYS)	RATE/DAY	
		Construction Foreman	1.00	14		
		Skilled Worker	2.00	14		
		Common Worker	4.00	14		
				Labor Cost	-----	
C	Equipment		QTY.	DUR. (DAYS)	RATE/DAY	
		One-bagger Concrete Mixer	1.00	2		
		Concrete Vibrator	1.00	2		
				Equipment Cost	-----	
A		Concrete Works, Material Cost				
B		Concrete Works, Labor Cost				
C		Concrete Works, Equipment Cost				
D		Concrete Works, Direct Cost				
INDIRECT COSTS						
1. OCM (15% of D.C) 15.0% of Estimated Direct Cost						
2. CONTRACTOR'S PROFIT (10% of D.C) 10.0% of Estimated Direct Cost						
E. TOTAL OCM & CONTRACTOR'S PROFIT 25.0% of D						
F. VALUE ADDED TAX, (VAT) 5.0% of (D + E)						
G. TOTAL ESTIMATED INDIRECT COST (E + F), P						
H. TOTAL ESTIMATED UNIT INDIRECT COST (G / Quantity), P/Unit						
TOTAL ESTIMATED COST (D + G), P						
TOTAL ESTIMATED UNIT COST (Total Estimated Cost / Quantity), P/Unit						

1.03	Masonry Works		162.24	sq.m.		
A	Materials					
	150mm thk CHB		2,089.00	pcs.		
	40kg Portland Cement		217.00	bags		
	Sand		18.00	cu.m.		
	12mm dia. DRSB, 6meters		47.00	pcs.		
	10mm dia. DRSB, 6meters		44.00	pcs.		
	#16 GI Tie Wire		9.00	kgs		
				Material Cost
B	Labor		QTY.	DUR. (DAYS)	RATE/DAY	
	Construction Foreman		1.00	17		
	Skilled Worker		2.00	17		
	Common Worker		3.00	17		
				Labor Cost
A	Masonry Works Material Cost					
B	Masonry Works Labor Cost					
D	Masonry Works Direct Cost					
INDIRECT COSTS						
1. OCM (15% of TDC) 15.0% of Estimated Direct Cost						
2. CONTRACTOR'S PROFIT (10% of TDC) 10.0% of Estimated Direct Cost						
E. TOTAL OCM & CONTRACTOR'S PROFIT 25.0% of D						
F. VALUE ADDED TAX, (VAT) 5.0% of (D + E)						
G. TOTAL ESTIMATED INDIRECT COST (E + F), P						
H. TOTAL ESTIMATED UNIT INDIRECT COST (G / Quantity), P/Unit						
TOTAL ESTIMATED COST (D + G), P						
TOTAL ESTIMATED UNIT COST (Total Estimated Cost / Quantity), P/Unit						

L04	Steel Works		1,154.59	kgs		
A	Materials					
	<i>(Louver, Trusses, Purlins)</i>					
	44mm x 44mm x 4.75mm Angular Steel bar, 6m		6.00	pcs		
	38mm x 38mm x 4.75mm Angular Steel bar, 6m		4.00	pcs		
	100mm x 50mm x 1.5mm C- Purlins, 6m		9.00	pcs		
	38mm x 63mm x 4.75mm Angle Bar Purlins Cleat, 6m		1.00	pcs		
	50mm x 50mm Tubular Steel, 6m		24.00	pcs		
	1 1/2" Ø Stainless Steel Pipe, Sch. 40		3.00	pcs.		
	10mm Anchor Bolt w/ nuts & washers		13.00	pcs.		
	Welding rod, (20kg/box)		8.00	boxes		
	Oxygen		3.00	cyl		
	Acetylene		3.00	cyl		
				Material Cost	
B	Labor		QTY.	DUR. (DAYS)	RATE/DAY	
	Construction Foreman		1.00	7		
	Skilled Worker		4.00	7		
	Common Worker		4.00	7		
				Labor Cost	
C	Equipment		QTY.	DUR. (DAYS)	RATE/DAY	
	Welding Machine, 200Amp		2.00	4		
	51-100kw Generator Set		1.00	4		
	Dry-Acetylene Cutting Torch/Welding Outfit		1.00	4		
				Equipment Cost	
A	Steel Works Material Cost					
B	Steel Works Labor Cost					
C	Steel Works Equipment Cost					
D	Steel Works Direct Cost					
INDIRECT COSTS						
1. OCM (15% of TDC) 15.0% of Estimated Direct Cost						
2. CONTRACTOR'S PROFIT (10% of TDC) 10.0% of Estimated Direct Cost						
E. TOTAL OCM & CONTRACTOR'S PROFIT 25.0% of D						
F. VALUE ADDED TAX, (VAT) 5.0% of (D + E)						
G. TOTAL ESTIMATED INDIRECT COST (E + F), P						
H. TOTAL ESTIMATED UNIT INDIRECT COST (G / Quantity), P/Unit						
TOTAL ESTIMATED COST (D + G), P						
TOTAL ESTIMATED UNIT COST (Total Estimated Cost / Quantity), P/Unit						

1.05	Roofing Works (Above Roof)		118.08	sqm.		
A	Materials					
		GA #26 Long Span Rib-Type Roofing Sheet, Pre-Painted	17.54	sqm.		
		GA #24 GI Flashing (0.701mm x 2.44m), Pre-painted	7.00	pc.		
		Roof Sealant	5.00	tubes		
		Telesew	150.00	pc.		
				Material Cost	
B	Labour		QTY.	DUR. (DAYS)	RATE/DAY	
		Construction Foreman	1.00	2		
		Skilled Worker	1.00	2		
		Common Worker	2.00	2		
				Labour Cost	
A		Roofing Works Material Cost				
B		Roofing Works Labor Cost				
D		Roofing Works Direct Cost				
INDIRECT COSTS						
1. OCM (15% of TDC) 15.0% of Estimated Direct Cost						
2. CONTRACTOR'S PROFIT (10% of TDC) 10.0% of Estimated Direct Cost						
E. TOTAL OCM & CONTRACTOR'S PROFIT 25.0% of D						
F. VALUE ADDED TAX (VAT) 5.0% of (D + E)						
G. TOTAL ESTIMATED INDIRECT COST (E + F), P						
H. TOTAL ESTIMATED UNIT INDIRECT COST (G / Quantity), P/Unit						
TOTAL ESTIMATED COST (D + G), P						
TOTAL ESTIMATED UNIT COST (Total Estimated Cost / Quantity), P/Unit						

1.00	Septic Tank & Catch Basin	5.00	sqm		
A	Materials				
	40kg Portland Cement	57.00	bags		
	Sand	5.00	cum		
	3/4" Gravel	4.00	cum		
	150mm blk. CHB	285.00	pcs		
	12mm D57B, 6m	82.00	pcs		
	10mm D57B, 6m	1.00	pcs		
	#16 Gal Tie Wire	7.00	kg		
			Material Cost	
B	Labor	QTY.	DUR (DAYS)	RATE/DAY	
	Construction Foreman	1.00	6		
	Skilled Worker	5.00	6		
	Common Worker	2.00	6		
			Labor Cost	
A	Septic Tank Material Cost				
B	Septic Tank Labor Cost				
D	Septic Tank Direct Cost				
INDIRECT COSTS					
1. OCM (15% of TOC) 15.0% of Estimated Direct Cost					
2. CONTRACTOR x PROFIT (10% of TOC) 10.0% of Estimated Direct Cost					
E. TOTAL OCM & CONTRACTOR x PROFIT 25.0% of D					
F. VALUE ADDED TAX, (VAT) 5.0% of (D + E)					
G. TOTAL ESTIMATED INDIRECT COST (E + F), P					
H. TOTAL ESTIMATED UNIT INDIRECT COST (G / Quantity), P/Unit					
TOTAL ESTIMATED COST (D + G), P					
TOTAL ESTIMATED UNIT COST (Total Estimated Cost / Quantity), P/Unit					

NAME OF PROJECT :		CONSTRUCTION OF GENDER NEUTRAL TOILET				
DESCRIPTION :		Construction of Gender Neutral Toilet at Rambhan AP-GAD				
LOCATION :		Rambhan Airport, Alantaya, Rambhan				
				QUANTITY	UNIT	
SUBJECT :		Bill of Materials & Cost Estimate			LCO	Unit
2.00	ARCHITECTURAL WORKS					
2.01	Tile & Stone Works			125.04	sqm.	
A	Materials					
	600mm x 600mm Matte Finish Base Tile			96.00	pcs.	
	300mm x 600mm Homogeneous Wall Tile			528.00	pcs.	
	300mm x 600mm Trim Tile			96.00	pcs.	
	Clay Bricks, 75mm x 100mm			3.20	sq.m.	
	Tile Grout (2.5 kgs.)			32.00	pcs.	
	Tile Adhesive (25 kgs.)			32.00	pcs.	
	Stone Adhesive (25 kgs.)			LCO	bag	
					Material Cost	
					
B	Labor			QTY.	DUR. (DAYS)	
	Construction Foreman			LCO	12	
	Skilled Worker			2.00	12	
	Common Worker			4.00	12	
					Labor Cost	
					
A	Tile & Stone Works Material Cost					
B	Tile & Stone Works Labor Cost					
D	Tile & Stone Works Direct Cost					
INDIRECT COSTS						
1. OCM (15% of TOC) 15.0% of Estimated Direct Cost						
3. CONTRACTOR'S PROFIT (10% of TOC) 10.0% of Estimated Direct Cost						
E. TOTAL OCM & CONTRACTOR'S PROFIT 25.0% of D						
F. VALUE ADDED TAX, (VAT) 5.0% of (D + E)						
G. TOTAL ESTIMATED INDIRECT COST (E + F), P						
H. TOTAL ESTIMATED UNIT INDIRECT COST (G / Quantity), P/Unit						
TOTAL ESTIMATED COST (D + G), P						
TOTAL ESTIMATED UNIT COST (Total Estimated Cost / Quantity), P/Unit						

202	Carpentry Works					
A	Materials					
102.01	Ceiling		28.56	sq.m.		
		45mm thick PCam Board. (4' x 6')	14.00	pcr.		
		25mm x 25mm x 5m Wall Angle	11.00	pcr.		
		12mm x 25mm x 5m x 1.5mm Carrying Channel	11.00	pcr.		
		18mm x 45mm x 5m x 1.5mm Single Barring Channel	11.00	pcr.		
		Suspension Rod 5mm x 200mm	25.00	pcr.		
		Suspension G.I. Clip	77.00	pcr.		
		Rod Joiner	77.00	pcr.		
		Scrow	580.00	pcr.		
				Material Cost	
B	Labor		QTY.	DUR. (DAYS)	RATE/DAY	
		Construction Foreman	1.00	2		
		Skilled Worker	7.00	2		
		Common Worker	2.00	2		
				Labor Cost	
A	Carpentry Works Material Cost					
B	Carpentry Works Labor Cost					
D	Carpentry Works Direct Cost					
INDIRECT COSTS						
1. OCM (15% of TOC) 15.0% of Estimated Direct Cost						
2. CONTRACTOR'S PROFIT (30% of TOC) 30.0% of Estimated Direct Cost						
E. TOTAL OCM & CONTRACTOR'S PROFIT 25.0% of D						
F. VALUE ADDED TAX, (VAT) 5.0% of (D + E)						
G. TOTAL ESTIMATED INDIRECT COST (E + F), P						
H. TOTAL ESTIMATED UNIT INDIRECT COST (G / Quantity), P/Unit						
TOTAL ESTIMATED COST (D + G), P						
TOTAL ESTIMATED UNIT COST (Total Estimated Cost / Quantity), P/Unit						

2.03	Painting Works	185.86	sq.m.		
A	Materials				
2.03.01	Elastomeric Paint Finish (Ceiling, Softzone, Porozed Exterior Wall)	145.69	sq. m.		
	Flat Latex Paint	10.00	gal.		
	Elastomeric Paint	20.00	gal.		
	Concrete Neutralizer	8.00	gal.		
	Masonry Putty	6.00	gal.		
	Paint Roller with pan 9"	3.00	sets		
	Paint Brush, 4"	1.00	pcs		
	Paint Brush, 2"	3.00	pcs		
	Rugs	5.00	kgs		
2.03.02	Semi Gloss Paint Finish (Interior Wall)	31.79	sq. m.		
	Flat Latex Paint	3.00	gal.		
	Semi Gloss Latex Paint	5.00	gal.		
	Concrete Neutralizer	2.00	gal.		
	Masonry Putty	2.00	gal.		
	Paint Roller with pan 9"	1.00	set		
	Paint Brush, 4"	2.00	pcs		
	Paint Brush, 2"	2.00	pcs		
	Rugs	5.00	kgs		
2.03.03	Enamel Epoxy Paint (Tubular Trunk & Louver)	8.39	sq.m.		
	Red Oxide Primer	1.00	gal.		
	Quick Dry Enamel	1.00	gal.		
	Paint thinner	1.00	gal.		
	Paint Brush, 4"	1.00	pc		
	Paint Brush, 2"	1.00	pc		
	Rugs	5.00	kgs		
			Material Cost
B	Labor	qty.	DUR. (Days)	RATE/DAY	
	Construction Foreman	1.00	2.00		
	skilled Worker	2.00	2.00		
	Common Worker	1.00	2.00		
			Labor Cost
A	Painting Works Material Cost				
B	Painting Works Labor Cost				
D	Painting Works Direct Cost				
INDIRECT COSTS					
1. OCH (15% of TDC) 15.0% of Estimated Direct Cost					
2. CONTRACTOR'S PROFIT (10% of TDC) 10.0% of Estimated Direct Cost					
E. TOTAL OCH & CONTRACTOR'S PROFIT 25.0% of D					
F. VALUE ADDED TAX (VAT) 5.0% of (D + E)					
G. TOTAL ESTIMATED INDIRECT COST (E + F), P					
H. TOTAL ESTIMATED UNIT INDIRECT COST (G / Quantity), P/Unit					
TOTAL ESTIMATED COST (D + G), P					
TOTAL ESTIMATED UNIT COST (Total Estimated Cost / Quantity), P/Unit					

2.04	Doors and Windows		8.00	sets		
A	Materials					
	<i>Doors</i>		4.00	sets		
	D-1	1200mm x 2100mm Single-leaf Swing Out Hollow Core Door Painted Finish w/ Kick Plate (800mm x 300mm) (with complete door hardware and accessories)	1.00	set		
	D-2	850mm x 2100mm Single-leaf Swing Out Hollow Core Door Painted Finish w/ Kick Plate (550mm x 300mm) (with complete door hardware and accessories)	1.00	set		
	D-3	850mm x 2100mm Single-leaf Swing Out Hollow Core Door Painted Finish w/ Kick Plate (550mm x 300mm) (with complete door hardware and accessories)	1.00	set		
	D-4	850mm x 2100mm Single-leaf Swing Out Hollow Core Door Painted Finish w/ Kick Plate (550mm x 300mm) (with complete door hardware and accessories)	1.00	set		
	<i>Windows</i>		4.00	sets		
	W-1	2250mm x 600mm Six- bay Sliding Glass Window on Powder Coated Aluminum Frame Aluminum Frame (6mm thk Clear Glass) (with complete window hardware and accessories)	2.00	sets		
	W-2	1200mm x 600mm Three- bay Sliding Glass Window on Powder Coated Aluminum Frame (6mm thk Clear Glass) (with complete window hardware and accessories)	1.00	set		
	W-3	600mm x 600mm One- bay Sliding Glass Window on Powder Coated Aluminum Frame (6mm thk Clear Glass) (with complete window hardware and accessories)	1.00	set		
				Material Cost	
B	Labor		QTY.	DUR. (DAYS)	RATE/DAY	
		Construction Foreman	1.00	7		
		Skilled Worker	2.00	7		
		Common Worker	2.00	7		
				Labor Cost	
A	Doors and Windows Material Cost					
B	Doors and Windows Labor Cost					
D	Doors and Windows Direct Cost					
INDIRECT COSTS						
1. OCM (15% of TDC) 15.0% of Estimated Direct Cost						
2. CONTRACTOR'S PROFIT (10% of TDC) 10.0% of Estimated Direct Cost						
E. TOTAL OCM & CONTRACTOR'S PROFIT 25.0% of D						
F. VALUE ADDED TAX, (VAT) 5.0% of (D + E)						
G. TOTAL ESTIMATED INDIRECT COST (E + F), P						
H. TOTAL ESTIMATED UNIT INDIRECT COST (G / Quantity), P/Unit						
TOTAL ESTIMATED COST (D + G), P						
TOTAL ESTIMATED UNIT COST (Total Estimated Cost / Quantity), P/Unit						

				QUANTITY	UNIT
SUBJECT :				LAB	hr
Bill of Materials & Cost Estimate					
3.00	ELECTRICAL WORKS				
3.01	Lighting and Power Conduits and Fittings Materials			125.000	hr.
A					
	25mm diameter x 3m Electrical Metallic Tubing (1/2")			25.00	pc.
	25mm diameter Flexible Metal Conduit (1/2")			20.00	lm
	25mm diameter EMT Coupling			25.00	pc.
	25mm diameter EMT Connector with Locknut and Bushing			25.00	pc.
					Material Cost
D	Labor			QTY.	DUR. (DAYS)
	Master Electrician			1.00	1
	Skilled Worker			1.00	1
	Common Worker			2.00	1
					Labor Cost
A	Lighting and Power Conduits and Fittings Material Cost				
B	Lighting and Power Conduits and Fittings Labor Cost				
D	Lighting and Power Conduits and Fittings Direct Cost				
INDIRECT COSTS					
1. OCH (12% of TOC) 15.0% of Estimated Direct Cost					
2. CONTRACTOR'S PROFIT (10% of TOC) 10.0% of Estimated Direct Cost					
E. TOTAL OCH & CONTRACTOR'S PROFIT 25.0% of D					
F. VALUE ADDED TAX, (VAT) 5.0% of (D + E)					
G. TOTAL ESTIMATED INDIRECT COST (E + F), P					
H. TOTAL ESTIMATED UNIT INDIRECT COST (G / Quantity), P/Unit					
TOTAL ESTIMATED COST (D + G), P					
TOTAL ESTIMATED UNIT COST (Total Estimated Cost / Quantity), P/Unit					

3.02	Wires & Cables		3.00	rolls		
A	Materials					
	3.5 mm ² THHN/THWN-2 600V 90°C Copper Wire, UL Listed		2.00	rolls		
	2.0 mm ² THHN/THWN-2 600V 90°C Copper Wire, UL Listed		1.00	roll	Material Cost
B	Labor		QTY.	DUR. (DAYS)	RATE/DAY	
	Master Electrician		1.00	1		
	Skilled Worker		1.00	1		
	Common Worker		4.00	1	Labor Cost
A	Wires & Cables Material Cost					
B	Wires & Cables Labor Cost					
D	Wires & Cables Direct Cost					
INDIRECT COSTS						
1. GCM (15% of TDC) 15.0% of Estimated Direct Cost						
2. CONTRACTOR'S PROFIT (10% of TDC) 10.0% of Estimated Direct Cost						
E. TOTAL GCM & CONTRACTOR'S PROFIT 25.0% of D						
F. VALUE ADDED TAX, (VAT) 5.0% of (D + E)						
G. TOTAL ESTIMATED INDIRECT COST (E + F), P						
H. TOTAL ESTIMATED UNIT INDIRECT COST (G / Quantity), P/Unit						
TOTAL ESTIMATED COST (D + G), P						
TOTAL ESTIMATED UNIT COST (Total Estimated Cost / Quantity), P/Unit						

1.03	Electrical Wiring Devices			11.00	sets		
A	Materials						
		Hand Dryer Outlet (Universal type w/ ground)		3.00	sets		
		One-Pole Switch, 15A, 250V, wide series with mounting strap and device plate cover		4.00	sets		
		Two-Pole Switch, 15A, 250V, wide series with mounting strap and device plate cover		1.00	sets		
		Three-Pole Switch, 15A, 250V, wide series with mounting strap and device plate cover		3.00	sets		
					Material Cost	
B	Labor			QTY.	DUR. (DAYS)	RATE/DAY	
		Skilled Worker		1.00	1		
					Labor Cost	
A		Electrical Wiring Devices Material Cost					
B		Electrical Wiring Devices Labor Cost					
D		Electrical Wiring Devices Direct Cost					
INDIRECT COSTS							
1. OCM (15% of DCC) 15.0% of Estimated Direct Cost							
2. CONTRACTOR'S PROFIT (10% of DCC) 10.0% of Estimated Direct Cost							
F. TOTAL OCM & CONTRACTOR'S PROFIT 25.0% of D							
E. VALUE ADDED TAX, (VAT) 5.0% of (D + F)							
G. TOTAL ESTIMATED INDIRECT COST (E + F), P							
H. TOTAL ESTIMATED UNIT INDIRECT COST (G / Quantity), P/UNIT							
TOTAL ESTIMATED COST (D + G), P							
TOTAL ESTIMATED UNIT COST (Total Estimated Cost / Quantity), P/UNIT							

3.04	Lighting Fixtures	25.00	sets		
A	Materials				
	4" diameter recessed type vertical lamp downlight fixture, powder coated white finish steel housing, matte aluminum reflector and full frosted glass cover with 1x5W, 500- lumen warm white LED bulb	7.00	sets		
	4" diameter surface mounted vertical lamp downlight fixture, powder coated white finish steel housing, matte aluminum reflector and full frosted glass cover with 1x5W, 500- lumen warm white LED bulb	4.00	sets		
	6" diameter recessed type vertical lamp downlight fixture, powder coated white finish steel housing, matte aluminum reflector and full frosted glass cover with 1x11W, 1100- lumen warm white LED bulb	9.00	sets		
	4" diameter outdoor wall lamp with die-cast bracket, frosted glass diffuser, waterproof and double silicone rubber gasket with 2x7.5W warm white LED bulb	7.00	sets		
	1.2m T5 LED tube, 18 Watts, 1800-lumen, warm white and box type set with connecting cable and end cap	5.00	sets		
	0.6m T5 LED tube, 10 Watts, 1000-lumen, warm white and box type set with connecting cable and end cap	3.00	sets		
	Heavy Duty Emergency Lamp Dual Optics, 2x3Watts LED Bulb	2.00	sets		
			Material Cost	
B	Labor	QTY.	DUR. (DAYS)	RATE/DAY	
	Master Electrician	1.00	2		
	Skilled Worker	1.00	2		
	Common Worker	3.00	2		
			Labor Cost	
A	Lighting Fixtures Material Cost				
B	Lighting Fixtures Labor Cost				
D	Lighting Fixtures Direct Cost				
INDIRECT COSTS					
1. OOH (15% of TDC) 15.0% of Estimated Direct Cost					
2. CONTRACTOR'S PROFIT (10% of TDC) 10.0% of Estimated Direct Cost					
E. TOTAL OOH & CONTRACTOR'S PROFIT 25.0% of D					
F. VALUE ADDED TAX (VAT) 5.0% of (D + E)					
G. TOTAL ESTIMATED INDIRECT COST (E + F), P					
H. TOTAL ESTIMATED UNIT INDIRECT COST (G / Quantity), P/Unit					
TOTAL ESTIMATED COST (D + G), P					
TOTAL ESTIMATED UNIT COST (Total Estimated Cost / Quantity), P/Unit					

3.05	Boxes and Pullboxes		37.00	pcs		
A	Materials					
		Octagonal Junction Box, Steel Gauge 16	25.00	pcs		
		4 x 2 Utility Box, Steel Gauge 16	11.00	pcs		
		Metal Pull Box, 300mmx300mmx300mm, gauge 16	1.00	pcs		
				Material Cost	
B	Labor		QTY.	DUR. (DAYS)	RATE/DAY	
		Skilled Worker	1.00	1		
				Labor Cost	
A		Boxes and Pullboxes Material Cost				
B		Boxes and Pullboxes Labor Cost				
D		Boxes and Pullboxes Direct Cost				
INDIRECT COSTS						
1. GCM (15% of TDC) 15.0% of Estimated Direct Cost						
2. CONTRACTOR'S PROFIT (10% of TDC) 10.0% of Estimated Direct Cost						
E. TOTAL GCM & CONTRACTOR'S PROFIT 25.0% of D						
F. VALUE ADDED TAX, (VAT) 5.0% of (D + E)						
G. TOTAL ESTIMATED INDIRECT COST (E + F), P						
H. TOTAL ESTIMATED UNIT INDIRECT COST (G / Quantity), P/Unit						
TOTAL ESTIMATED COST (D + G), P						
TOTAL ESTIMATED UNIT COST (Total Estimated Cost / Quantity), P/Unit						

3.00	Panelboard/Circuit Breaker		1.00	each	
A	Materials				
	Panel Board Main: 80AT, 100AF, 2-Pole, 10KALC, 250V, 50Hz Branches: 6 - 20AT, 100AF, 2-Pole, 230V, 10KALC, hot-rod With Grounding Bus Bar, Terminal Lugs and Bolted Door Front Enclosure: NEMA-1 Gauge 36, Powder coated gray finish		1.00	each	
				Material Cost
B	Labor		QTY.	DUR. (DAYS)	RATE/DAY
	Master Electrician		1.00	1	
	Skilled Worker		1.00	1	
	Common Worker		4.00	1	
				Labor Cost
A	Panelboard/Circuit Breaker Material Cost :				
B	Panelboard/Circuit Breaker Labor Cost				
D	Panelboard/Circuit Breaker Direct Cost				
INDIRECT COSTS					
1. OCH (15% of TDC) (5.0% of Estimated Direct Cost)					
2. CONTRACTOR'S PROFIT (10% of TDC) (10.0% of Estimated Direct Cost)					
E. TOTAL OCH & CONTRACTOR'S PROFIT (5.0% of D)					
F. VALUE ADDED TAX, (VAT) 5.0% of (D + E)					
G. TOTAL ESTIMATED INDIRECT COST (E + F), P					
H. TOTAL ESTIMATED UNIT INDIRECT COST (G / Quantity), P/Unit					
TOTAL ESTIMATED COST (D + G), P					
TOTAL ESTIMATED UNIT COST (Total Estimated Cost / Quantity), P/Unit					

3.07	Feeder Conductors		500.00	Lm.		
A	Materials:					
		5.5 mm ² THHN/THWN-2 600V 90°C Copper Wire, UL Listed	125.00	Lm.		
		8.0 mm ² THHN/THWN-2 600V 90°C Copper Wire, UL Listed	375.00	Lm.		
				Material Cost	
B	Labor		QTY	DUR. (DAYS)	RATE/DAY	
		Master Electrician	1.00	3		
		Skilled Worker	1.00	3		
		Common Worker	4.00	3		
				Labor Cost	
A	Feeder Conductors Material Cost					
B	Feeder Conductors Labor Cost					
D	Feeder Conductors Direct Cost					
INDIRECT COSTS						
1. OCM (15% of TDC) 15.0% of Estimated Direct Cost						
2. CONTRACTOR'S PROFIT (10% of TDC) 10.0% of Estimated Direct Cost						
E. TOTAL OCM & CONTRACTOR'S PROFIT 25.0% of D						
F. VALUE ADDED TAX, (VAT) 5.0% of (D + E)						
G. TOTAL ESTIMATED INDIRECT COST (E + F), P						
H. TOTAL ESTIMATED UNIT INDIRECT COST (G / Quantity), P/Unit						
TOTAL ESTIMATED COST (D + G), P						
TOTAL ESTIMATED UNIT COST (Total Estimated Cost / Quantity), P/Unit						

3.09	Ventilation		5.00	sets		
A	Materials					
		14" x 14" white ceiling type exhaust fan with complete standard accessories. Aluminum vent caps and ducts	5.00	sets	Material Cost
B	Labor		QTY.	DUR. (DAYS)	RATE/DAY	
		Master Electrician	1.00	1		
		Skilled Worker	1.00	1		
		Common Worker	2.00	1	Labor Cost
A		Ventilation Material Cost				
B		Ventilation Labor Cost				
D		Ventilation Direct Cost				
INDIRECT COSTS						
1. OCH (15% of TOC) 15.0% of Estimated Direct Cost						
2. CONTRACTOR'S PROFIT (15% of TOC) 15.0% of Estimated Direct Cost						
E. TOTAL OCH & CONTRACTOR'S PROFIT 15.0% of D						
F. VALUE ADDED TAX, (VAT) 5.0% of (D + E)						
G. TOTAL ESTIMATED INDIRECT COST (E + F), P						
H. TOTAL ESTIMATED UNIT INDIRECT COST (G / Quantity), P/Unit						
TOTAL ESTIMATED COST (D + G), P						
TOTAL ESTIMATED UNIT COST (Total Estimated Cost / Quantity), P/Unit						

3.10	Termination Accessories	1.00	set		
A	Materials				
	G.I. Tie Wire Ga. 16	1.00	kg		
	Electrical Tape, 0.50mm×15mm×100m	2.00	pcs	Material Cost
B	Labor	QTY.	DUR. (DAYS)	RATE/DAY	
	Common Worker	1.00	1	1 Labor Cost
A	Termination Accessories Material Cost				
B	Termination Accessories Labor Cost				
D	Termination Accessories Direct Cost				
INDIRECT COSTS					
1. OCM (15% of TDC) 15.0% of Estimated Direct Cost					
2. CONTRACTOR'S PROFIT (10% of TDC) 10.0% of Estimated Direct Cost					
E. TOTAL OCM & CONTRACTOR'S PROFIT 25.0% of D					
F. VALUE ADDED TAX, (VAT) 5.0% of (D + E)					
G. TOTAL ESTIMATED INDIRECT COST (E + F), P					
H. TOTAL ESTIMATED UNIT INDIRECT COST (G / Quantity), P/Unit					
TOTAL ESTIMATED COST (D + G), P					
TOTAL ESTIMATED UNIT COST (Total Estimated Cost / Quantity), P/Unit					

				QUANTITY	UNIT
SUBJECT :		Bill of Materials & Cost Estimate		1.00	Set
4.00	PLUMBING WORKS				
A	Materials	46.0			
4.01	Fixtures and Accessories	0	pcs.		
	12mm thick Porcelain board w/ fittings for Toilet Partition	11.00	sq.m		
	Water Closet Vitreous - elongated with lever flush mechanism with complete fittings	5.00	pcs.		
	Urinal Vitreous - Stall type with lever flush mechanism and complete fittings	5.00	pc.		
	Bidet spray w/ complete accessories- Chrome ABS body, flexible hose 1200 x 1/2 x 1/2 w/ max working pressure of 75psi spray head 102mm x 52mmW & hand spray wall holder 35mm dia	5.00	sets		
	Lavatory Including Fittings & Accessories (American Standard or equivalent)	5.00	pcs.		
	Hand Sanitizer	3.00	pcs.		
	Hand Dryer	3.00	pcs.		
	700mm x 450mm Bevelled Mirror	1.00	pc.		
	700mm x 2450mm Bevelled Mirror	1.00	pc.		
	Floor drain, 300mm x 100mm, stainless steel	9.00	pcs.		
	Stainless Ledge	3.00	pcs.		
	Granite Countertop 0.60m x 2.20m	3.00	pcs.		
	Hose Bibb	2.00	sets		
			Materials		
			/ Cost	
			DUR.		
			(DAYS)		
			RATE/DAY		
B	Labor	QTY.			
	Master Plumber	1.00	DD		
	Skilled Worker	2.00	DD		
	Common Worker	2.00	DD		
			Labor		
			Cost	
A	Fixtures: Material Cost				
B	Fixtures: Labor Cost				
D	Fixtures: Direct Cost				
INDIRECT COSTS					
1. OCH (10% of TDC) 10.0% of Estimated Direct Cost					
2. CONTRACTOR'S PROFIT (10% of TDC) 10.0% of Estimated Direct Cost					
E. TOTAL OCH & CONTRACTOR'S PROFIT 20.0% of D					
F. VALUE ADDED TAX, (VAT) 5.0% of (D + E)					
G. TOTAL ESTIMATED INDIRECT COST (E + F), P					
H. TOTAL ESTIMATED UNIT INDIRECT COST (G / Quantity), P/Unit					
TOTAL ESTIMATED COST (D + G), P					
TOTAL ESTIMATED UNIT COST (Total Estimated Cost / Quantity), P/Unit					

4.02	Sewer Line System		89.00	Lim.		
	4" x PVC Pipe (Series 1000), 3 meters		12.00	pcs.		
	3" x PVC Pipe (Series 1000), 3 meters		12.00	pcs.		
	2" x PVC Pipe (Series 1000), 3 meters		9.00	pcs.		
	2" PVC P-trap		15.00	pcs.		
	4"x4"x2" PVC Wye		15.00	pcs.		
	4" PVC Wye		6.00	pcs.		
	3" PVC Wye		4.00	pcs.		
	4" x 4" x 2" PVC Tee		9.00	pcs.		
	2" x 2" x 3" PVC Tee		11.00	pcs.		
	3" x 3" x 3" PVC Tee		4.00	pcs.		
	3" x 3" PVC 90deg. Elbow		7.00	pcs.		
	4" x 4" PVC 90deg. Elbow		5.00	pcs.		
	4" x 2" PVC 45deg. Elbow		15.00	pcs.		
	4" x 4" PVC 45deg. Elbow		8.00	pcs.		
	4" PVC Cleanout Set		2.00	pcs.		
	100mm x 100mm Stainless Steel Access Cover		2.00	pcs.		
	Solvent Cement (400cc)		2.00	can		
				Material Cost	
B	Labor		QTY.	DUR. (DAYS)	RATE/DAY	
	Master Plumber		1.00	1		
	Skilled Worker		2.00	1		
	Common Worker		2.00	1		
				Labor Cost	
A	Sewer Line System Material Cost					
B	Sewer Line System Labor Cost					
D	Sewer Line System Direct Cost					
INDIRECT COSTS						
1. OCM (15% of TDC) 15.0% of Estimated Direct Cost						
2. CONTRACTOR'S PROFIT (10% of TDC) 10.0% of Estimated Direct Cost						
E. TOTAL OCM & CONTRACTOR'S PROFIT 25.0% of D						
F. VALUE ADDED TAX, (VAT) 5.0% of (D + E)						
G. TOTAL ESTIMATED INDIRECT COST (F + E), P						
II. TOTAL ESTIMATED UNIT INDIRECT COST (G / Quantity), P/Unit						
TOTAL ESTIMATED COST (D + G), P						
TOTAL ESTIMATED UNIT COST (Total Estimated Cost / Quantity), P/Unit						

4.03	Waterline System		81.00	lin.	
	1/4" Ø PPR Pipe (FR 10), 4 meters		10.00	pc.	
	1/2" Ø PPR Pipe (FR 10), 4 meters		4.00	pc.	
	3/4" Ø PPR Elbow, Elbow		2.00	pc.	
	1/4" Ø x 1/2" Ø PPR 90deg. Elbow		1.00	pc.	
	1/2" Ø x 1/2" Ø PPR 90deg. Elbow		2.00	pc.	
	1/4" Ø x 3/4" Ø x 1/2" Ø PPR Tee		10.00	pc.	
	1/2" Ø x 3/4" Ø x 1/2" Ø PPR Tee		10.00	pc.	
	3/4" Ø x 1/2" Ø x 3/4" Ø PPR Tee		5.00	pc.	
	1/4" Ø PPR End Cap		10.00	pc.	
	1/2" Ø PPR End Cap		5.00	pc.	
	1/2" Ø x 12" SS Ripple		10.00	pc.	
	3/4" Ø x 12" SS Ripple		5.00	pc.	
	1/4" Ø PPR Coupling		5.00	pc.	
	1/2" Ø PPR Coupling		4.00	pc.	
	1/2" Brass Gate Valve		1.00	pc.	
	1/2" Cast Iron Body Water Meter		1.00	pc.	
	1/2" Brass Check Valve		1.00	pc.	
	3/4" Ø x 1/2" Ø Angle Valve		5.00	pc.	
	1/2" Ø Angle Valve		5.00	pc.	
	Teflon Tape		10.00	roll	
				Material Cost
B	Labor		117.	Dir. (DAYS)	PAID/DIR
	Master Plumber		1.00	4	
	Skilled Worker		2.00	4	
	General Worker		2.00	4	
				Labor Cost
A	Waterline System Material Cost				
B	Waterline System Labor Cost				
D	Waterline System Direct Cost				
INDIRECT COSTS					
1. OCH (10% of TOC) 15.0% of Estimated Direct Cost					
2. CONTRACTOR'S PROFIT (10% of TOC) 10.0% of Estimated Direct Cost					
E. TOTAL OCH & CONTRACTOR'S PROFIT 25.0% of D					
F. VALUE ADDED TAX, (VAT) 2.0% of [D + E]					
G. TOTAL ESTIMATED INDIRECT COST [E + F], P					
H. TOTAL ESTIMATED UNIT INDIRECT COST [G / Quantity], P/Unit					
TOTAL ESTIMATED COST [D + G], P					
TOTAL ESTIMATED UNIT COST (Total Estimated Cost / Quantity), P/Unit					

4.04	Storm Drainage System		59.00	lms.		
A	4" Ø uPVC Pipe (Series 1000), 3 meters		21.00	pcs.		
	4" Ø uPVC 90deg. Elbow		4.00	pcs.		
	4" Ø Brass Roof Drain, Down pipe with Strainer		4.00	sets		
	Epoxy Cement (405cc)		3.00	bags		
				Material Cost	
B	Labor		QTY	DUR. (DAYS)	RATE/DAY	
	Master Plumber		1.00	3		
	Skilled Worker		2.00	3		
	Common Worker		2.00	3		
				Labor Cost	
A	Storm Drainage System Material Cost					
B	Storm Drainage System Labor Cost					
D	Storm Drainage System Direct Cost					
INDIRECT COSTS						
1. OCM (15% of TOC) 15.0% of Estimated Direct Cost						
2. CONTRACTOR'S PROFIT (10% of TOC) 10.0% of Estimated Direct Cost						
E. TOTAL OCM & PROFIT 25.0% of D						
F. VALUE ADDED TAX, (VAT) 5.0% of (D + E)						
G. TOTAL ESTIMATED INDIRECT COST (F + E), P						
H. TOTAL ESTIMATED UNIT INDIRECT COST (G / Quantity), P/Unit						
TOTAL ESTIMATED COST (D + G), P						
TOTAL ESTIMATED UNIT COST (Total Estimated Cost / Quantity), P/Unit						

SUBJECT :					QUANTITY	UNIT
Bill of Materials & Cost Estimate					1.00	sq.
3.00	MISCELLANEOUS STRUCTURE (Project Information Sign)					
A	Materials					
3.01	Signboard and Frames				LDD	LOT
		Form Lumber (Coco)		25.33	bd.ft	
		Acrylic GWN		1.00	kg	
		1/2" = 4' x 8' Ordinary Plywood		2.00	pc	
		Sign		1.00	sets	
					Material Cost
B	Labor				QTY.	DUR. (DAYS)
		Skilled Worker		1.00	1	
		Common Worker		1.00	1	
					Labor Cost
A	Signboard and Frames Material Cost					
B	Signboard and Frames Labor Cost					
D	Signboard and Frames Cost					
INDIRECT COSTS						
1. OCM (15% of TOC) 25.0% of Estimated Direct Cost						
2. CONTRACTOR'S PROFIT (10% of TOC) 30.0% of Estimated Direct Cost						
E. TOTAL OCM & CONTRACTOR'S PROFIT 25.0% of D						
F. VALUE ADDED TAX, (VAT) 5.0% of (D + E)						
G. TOTAL ESTIMATED INDIRECT COST (E + F), P						
H. TOTAL ESTIMATED UNIT INDIRECT COST (G / Quantity), P/Unit						
TOTAL ESTIMATED COST (D + G), P						
TOTAL ESTIMATED UNIT COST (Total Estimated Cost / Quantity), P/Unit						

Section IX. Checklist of Technical and Financial Documents

Checklist of Technical and Financial Documents

I. TECHNICAL COMPONENT ENVELOPE

Class "A" Documents

Legal Documents

- (a) Valid PhilGEPS Registration Certificate (Platinum Membership) (all pages) in accordance with Section 8.5.2 of the IRR;

Technical Documents

- (b) Statement of the prospective bidder of all its ongoing government and private contracts, including contracts awarded but not yet started, if any, whether similar or not similar in nature and complexity to the contract to be bid; **and**
- (c) Statement of the bidder's Single Largest Completed Contract (SLCC) similar to the contract to be bid, except under conditions provided under the rules; **and**
- (d) Special PCAB License in case of Joint Ventures **and** registration for the type and cost of the contract to be bid; **and**
- (e) Original copy of Bid Security. If in the form of a Surety Bond, submit also a certification issued by the Insurance Commission **or** original copy of Notarized Bid Securing Declaration; **and**
- (f) Project Requirements, which shall include the following:
 - a. Organizational chart for the contract to be bid;
 - b. List of contractor's key personnel (*e.g.*, Project Manager, Project Engineers, Materials Engineers, and Foremen), to be assigned to the contract to be bid, with their complete qualification and experience data;
 - c. List of contractor's major equipment units, which are owned, leased, and/or under purchase agreements, supported by proof of ownership or certification of availability of equipment from the equipment lessor/vendor for the duration of the project, as the case may be; **and**
- (g) Original duly signed Omnibus Sworn Statement (OSS) **and** if applicable, Original Notarized Secretary's Certificate in case of a corporation, partnership, or cooperative; or Original Special Power of Attorney of all members of the joint venture giving full power and authority to its officer to sign the OSS and do acts to represent the Bidder; and
- (h) Certificate of site inspection
- (i) Bid Supplement, if any
-

Financial Documents

- (j) The prospective bidder's computation of Net Financial Contracting Capacity (NFCC).

Class "B" Documents

- (k) If applicable, duly signed joint venture agreement (JVA) in accordance with RA No. 4566 and its IRR in case the joint venture is already in existence or duly notarized statements from all the potential joint venture partners stating that they will enter into and abide by the provisions of the JVA in the instance that the bid is successful.

II. FINANCIAL COMPONENT ENVELOPE

- (l) Original of duly signed and accomplished Financial Bid Form; **and**

Other documentary requirements under RA No. 9184

- (m) Original of duly signed Bid Prices in the Bill of Quantities; **and**
- (n) Duly accomplished Detailed Estimates Form, including a summary sheet indicating the unit prices of construction materials, labor rates, and equipment rentals used in coming up with the Bid; **and**
- (o) Cash Flow by Quarter.

(Note: Use the prescribed Standard Forms; bids that do not comply with the Standard Format shall be automatically disqualified)

Bidding Forms

Bidding Forms

(ANNEX "A")

Annex "A" Form 1 Statement of all On-Going Contracts

Annex "A" Form 2 Statement of Single Largest Completed Contract

Annex "A" Form 3 Bid Securing Declaration

Annex "A" Form 4 Organizational Chart of Contract to be Bid

Annex "A" Form 5a Qualification of Key Personnel Proposed to be Assigned in the Project

Annex "A" Form 5b Contractor's Letter-Certificate to Procuring Entity

Annex "A" Form 5c Key Personnel (Format of Bio-Data)

Annex "A" Form 6 List of Equipment Owned or Leased and/or under Purchased

Annex "A" Form 7 Omnibus Sworn Statement (Revised)

Annex "A" Form 8 Bid Form

ATTACH COMPANIE LE TITRES/DAL 0001

Summary of made to meet COMMITTED contracts and awards for contracts to be bid

Name of Project _____
 Location of Project _____

Name of Contractor _____
 Address of Company _____

Name of Contract	Owner's Name a. Address b. Telephone No.	Name of Work	Contractor's Role		Contract Amount at Award	Date Awarded b. Date of Contract c. Contract Duration d. Date Bidding e. Date Completed
			Description	%		

NOTE: Requirements for the completion of this form are set out in the contract documents. The contractor shall submit this form to the owner at the time of bid opening. The contractor shall also submit this form to the contractor's performance evaluation system. The contractor shall also submit this form to the contractor's performance evaluation system. The contractor shall also submit this form to the contractor's performance evaluation system. The contractor shall also submit this form to the contractor's performance evaluation system.

Submitted by _____
 (Print Name & Signature)

Designation _____

Date _____

CAAP-BAC-SF Annex "A" Form 2

Important Notice: This statement shall be accompanied by a Certificate of Final Acceptance issued by the owner, or a final rating of at least Satisfactory in the Constructors Performance Evaluation System (CPES). In the case of contracts with the private sector, an equivalent document shall be submitted. (Section 23.4.2.5 of the Revised IRR of Republic Act No. 9184)

Bid Securing Declaration Form

[shall be submitted with the Bid if bidder opts to provide this form of bid security]

REPUBLIC OF THE PHILIPPINES)
CITY OF _____) S.S.

BID SECURING DECLARATION
Project Identification No.: [Insert number]

To: *[Insert name and address of the Procuring Entity]*

I/We, the undersigned, declare that:

1. I/We understand that, according to your conditions, bids must be supported by a Bid Security, which may be in the form of a Bid Securing Declaration.
2. I/We accept that: (a) I/we will be automatically disqualified from bidding for any procurement contract with any procuring entity for a period of two (2) years upon receipt of your Blacklisting Order; and, (b) I/we will pay the applicable fine provided under Section 6 of the Guidelines on the Use of Bid Securing Declaration, within fifteen (15) days from receipt of the written demand by the procuring entity for the commission of acts resulting to the enforcement of the bid securing declaration under Sections 52.2, 63.2 and 69.1 of the IRR of RA No. 12009; without prejudice to other legal action the government may undertake.
3. I/We understand that this Bid Securing Declaration shall cease to be valid on the following circumstances:
 - a. Upon expiration of the bid validity period, or any extension thereof pursuant to your request;
 - b. I am/we are declared ineligible or post-disqualified upon receipt of your notice to such effect, and (i) I/we failed to timely file a request for reconsideration or (ii) I/we filed a waiver to avail of said right; and
 - c. I am/we are declared the bidder with the Lowest Calculated Responsive Bid, and I/we have furnished the performance security and signed the Contract.

IN WITNESS WHEREOF, I/We have hereunto set my/our hand/s this ____ day of [month] [year] at [place of execution].

[Insert NAME OF BIDDER OR ITS AUTHORIZED REPRESENTATIVE]
[Insert signatory's legal capacity]
Affiant

[Format shall be based on the latest Rules on Notarial Practice]

Contractor's Organizational Chart for the Project

Submit Copy of the Organizational Chart that the Contractor intends to use to execute the contract if awarded to him. Indicate in the chart the names of the Key Engineering Personnel who will be assigned in the Project.

{ATTACH COMPANY LETTERHEAD/LOGO}

Attach the required Proposed Organizational Chart for the Contract as stated above.

Submitted by: _____

Designation : _____

Date : _____

CONTACT INFORMATION (APPLICANT)

Qualification of Key Personnel Program/Project/Activity/Event

Name of Project : _____
 Location of Project : _____
 Name of Property : _____
 Address of Company : _____

	Project/Client/Project - Organization/Instructor	Concentration/Activity - Individual/Other	Other Position/Qualification required for the application for the project
1. Name			
2. Address			
3. Date of Birth			
4. Employment Status			
5. Experience			
6. Previous Employment			
7. Education			
8. POC: Name			

Note: Attached individual POC licenses is item of essential personnel.

Submitted by : _____
 Organization : _____
 Date : _____
 (Signature over Printed Name)

{ATTACH COMPANY LETTERHEAD/LOGO}

Date: _____

ATTY. ROAN JILL E. HABOC
Chairperson, Bids and Awards Committee Area Center III
Civil Aviation Authority of the Philippines
Mia Road, Pasay City, M.M. 1300
Tel: 944-2358

Subject: Contractor's Letter-Certificate to Procuring Entity

Dear Sir:

Supplementing our Organizational Chart for the Contract, we have the honor to submit herewith, and to certify as true and correct, the following pertinent information:

That I/we have engaged the service of (Name of Employee), to be the (Designation) of the (Name of Project), who is a (Profession) with Professional License Certificate No. _____ issued on _____ and who has performed the duties in the construction of the project enumerated in the filled Annex "B" Form 5b.

That (Name of Employee) shall personally perform the duties of the said position in the above-mentioned project, if and when the same is awarded in our favor.

That (Name of Employee) shall employ the best care, skill and ability in performing his duties in accordance with the Contract Agreement, Conditions of Contract, Plans, Specifications, Special Provisions, and other provisions embodied in the proposed contract.

That (Name of Employee) shall be personally present at the jobsite all the time to supervise the phase of the construction work pertaining to his assignment as (Designation).

That (Name of Employee) is aware that he shall be authorized to handle only one contract at a time.

That in order to guarantee that (Name of Employee) shall perform his duties properly and be personally present in the Job Site, he is hereby required to secure a certificate of appearance for the Procuring Entity's Engineer at the end of every month.

That in the event that I/we elect or choose to replace (Name of Employee) with another Engineer, the Procuring Entity will be accordingly notified by us in writing at least twenty one (21) days before making replacement. We will submit to the Procuring Entity, for prior approval, the name of the proposed new (Designation), his qualification, experience, list of projects undertaken and other relevant information.

That any willful violation on my/our part of the herein conditions may prejudice my/our standing as a reliable contractor in future bidding of the Procuring Entity.

Very truly yours,

(Authorized Representative of Bidder)

CONCURRED BY:

(Name of Engineer)

KEY PERSONNEL
(FORMAT OF BIO-DATA)

Give the detailed information of the following personnel who are scheduled to be assigned as full-time field staff for the project. Fill up a form for each person.

1. Authorized Managing Officer / Representative: _____

2. Sustained Technical Employee:

Name: _____

Date of Birth: _____

Nationality: _____

Education and Degrees: _____

Specialty: _____

Registration: _____

Length of Service with the Firm:

_____ Year From _____ (months) _____ (year)

To _____ (months) _____ (year)

Years of Experience:

If Item 7 is less than ten (10) years, give name and length of service with previous employers for a ten (10) year period (attached additional sheet/s, if necessary):

Name and Address of Employer	Length of Service
_____	_____ year(s) from _____ to _____
_____	_____ year(s) from _____ to _____
_____	_____ year(s) from _____ to _____

Experience:

This should cover the past ten (10) years of experience. (Attached as many pages as necessary to show involvement of personnel in projects using the format below).

a. Name: _____

b. Name and Address of Owner: _____

c. Name and Address of the Owner's Engineer (Consultant): _____

d. Indicate the Features of Project (particulars of the project components)

and any other particular interest connected with the project): _____

e. Contract Amount Expressed in Philippine Currency: _____

f. Position: _____

g. Structures for which the employee was responsible: _____

h. Assignment Period: from _____(months) _____(years)

to _____(months) _____(years)

Name and Signature of Employee

It is hereby certified that the above personnel can be assigned to the _____ Project, if the contract is awarded to our company.

(Place and Date)

(The Authorized Representative)

List of Equipment, Component Parts, and/or Major Parts of Equipment From a Leasing Arrangement

Name of Provider _____
 Location of Property _____

Name of Lessee _____
 Address of Lessee _____

Item No.	Description	Model/Year	Equipment Performance Size	Part No.	Serial No./Body No.	Location	Condition	Estimated Useful Life in Years
A. Owned								
I.								
II.								
III.								
IV.								
V.								
B. Leased								
I.								
II.								
III.								
IV.								
V.								
C. Other Leased Equipment								
I.								
II.								
III.								
IV.								
V.								

Valued by _____
 Date/Initial _____
 (Appraiser or Valuer)

Omnibus Sworn Statement (Revised)

[shall be submitted with the Bid]

REPUBLIC OF THE PHILIPPINES)

CITY/MUNICIPALITY OF _____) S.S.

AFFIDAVIT

I, [Name of Affiant], of legal age, [Civil Status], [Nationality], and residing at [Address of Affiant], after having been duly sworn in accordance with law, do hereby depose and state that:

1. *[Select one, delete the other:]*

[If a sole proprietorship:] I am the sole proprietor or authorized representative of [Name of Bidder] with office address at [address of Bidder];

[If a partnership, corporation, cooperative, or joint venture:] I am the duly authorized and designated representative of [Name of Bidder] with office address at [address of Bidder];

2. *[Select one, delete the other:]*

[If a sole proprietorship:] As the owner and sole proprietor, or authorized representative of [Name of Bidder], I have full power and authority to do, execute and perform any and all acts necessary to participate, submit the bid, and to sign and execute the ensuing contract for [Name of the Project] of the [Name of the Procuring Entity], as shown in the attached duly notarized Special Power of Attorney;

[If a partnership, corporation, cooperative, or joint venture:] I am granted full power and authority to do, execute and perform any and all acts necessary to participate, submit the bid, and to sign and execute the ensuing contract for [Name of the Project] of the [Name of the Procuring Entity], as shown in the attached [state title of attached document showing proof of authorization (e.g., duly notarized Secretary's Certificate, Board/Partnership Resolution, or Special Power of Attorney, whichever is applicable)];

3. [Name of Bidder] is not "blacklisted" or barred from bidding by the Government of the Philippines or any of its agencies, offices, corporations, or Local Government Units, foreign government/foreign or international financing institution whose blacklisting rules have been recognized by the Government Procurement Policy Board, **by itself or by relation, membership, association, affiliation, or controlling interest with another blacklisted person or entity as defined and provided for in the Uniform Guidelines on Blacklisting;**

4. Each of the documents submitted in satisfaction of the bidding requirements is an authentic copy of the original, complete, and all statements and information provided therein are true and correct;

5. [Name of Bidder] is authorizing the Head of the Procuring Entity or its duly authorized representative(s) to verify all the documents submitted;

6. *[Select one, delete the rest:]*

[If a sole proprietorship:] The owner or sole proprietor is not related to the Head of the Procuring Entity, Procurement Agent if engaged, members of the Bids and Awards Committee (BAC), the Technical Working Group, and the BAC Secretariat, the head of the Project Management Office or the end-user unit, and the project consultants by consanguinity or affinity up to the third civil degree;

[If a partnership or cooperative:] None of the officers and members of [Name of Bidder] is related to the Head of the Procuring Entity, Procurement Agent if engaged, members of the Bids and Awards Committee (BAC), the Technical Working Group, and the BAC Secretariat, the head of the Project Management Office or the end-user unit, and the project consultants by consanguinity or affinity up to the third civil degree;

[If a corporation or joint venture:] None of the officers, directors, and controlling stockholders of [Name of Bidder] is related to the Head of the Procuring Entity, Procurement Agent if engaged, members of the Bids and Awards Committee (BAC), the Technical Working Group, and the BAC Secretariat, the head of the Project Management Office or the end-user unit, and the project consultants by consanguinity or affinity up to the third civil degree;

7. [Name of Bidder] complies with existing labor laws and standards; and

8. [Name of Bidder] is aware of and has undertaken the responsibilities as a Bidder in compliance with the Philippine Bidding Documents, which includes:

- a. Carefully examining all of the Bidding Documents;
- b. Acknowledging all conditions, local or otherwise, affecting the implementation of the Contract;
- c. Making an estimate of the facilities available and needed for the contract to be bid, if any; and
- d. Inquiring or securing Supplemental/Bid Bulletin(s) issued for the [Name of the Project].

9. [Name of Bidder] did not give or pay directly or indirectly, any commission, amount, fee, or any form of consideration, pecuniary or otherwise, to any person or official, personnel or representative of the government in relation to any procurement project or activity.

10. In case advance payment was made or given, failure to perform or deliver any of the obligations and undertakings in the contract shall be sufficient grounds to constitute criminal liability for Swindling (Estafa) or the commission of fraud with unfaithfulness or abuse of confidence through misappropriating or converting any payment received by a person or entity under an obligation involving the duty to deliver certain goods or services, to the prejudice of the public and the government of the Philippines pursuant to Article 315 of Act No. 3815 s. 1930, as amended, or the Revised Penal Code.

IN WITNESS WHEREOF, I have hereunto set my hand this __ day of __, 20__ at _____,
Philippines.

*[Insert NAME OF BIDDER OR ITS AUTHORIZED
REPRESENTATIVE]*

[Insert signatory's legal capacity]

Affiant

[Format shall be based on the latest Rules on Notarial Practice]

Bid Form for the Procurement of Infrastructure Projects

[shall be submitted with the Bid]

BID FORM

Date : _____

Project Identification No. : _____

To: *[name and address of Procuring Entity]*

Having examined the Philippine Bidding Documents (PBDs) including the Supplemental or Bid Bulletin Numbers *[insert numbers]*, the receipt of which is hereby duly acknowledged, we, the undersigned, declare that:

- a. We have no reservation to the PBDs, including the Supplemental or Bid Bulletins, for the Procurement Project: *[insert name of contract]*;
- b. We offer to execute the Works for this Contract in accordance with the PBDs;
- c. The total price of our Bid in words and figures, excluding any discounts offered below is: *[insert information]*;
- d. The discounts offered and the methodology for their application are: *[insert information]*;
- e. The total bid price includes the cost of all taxes, such as, but not limited to: *[specify the applicable taxes, e.g. (i) value added tax (VAT), (ii) income tax, (iii) local taxes, and (iv) other fiscal levies and duties]*, which are itemized herein and reflected in the detailed estimates,
- f. Our Bid shall be valid within the a period stated in the PBDs, and it shall remain binding upon us at any time before the expiration of that period;
- g. If our Bid is accepted, we commit to obtain a Performance Security in the amount of *[insert percentage amount]* percent of the Contract Price for the due performance of the Contract, or a Performance Securing Declaration in lieu of the the allowable forms of Performance Security, subject to the terms and conditions of issued GPPB guidelines¹ for this purpose;

¹ currently based on GPPB Resolution No. 09-2020

- h. We are not participating, as Bidders, in more than one Bid in this bidding process, other than alternative offers in accordance with the Bidding Documents;
- i. We understand that this Bid, together with your written acceptance thereof included in your notification of award, shall constitute a binding contract between us, until a formal Contract is prepared and executed; and
- j. We understand that you are not bound to accept the Lowest Calculated Bid or any other Bid that you may receive.
- k. We likewise certify/confirm that the undersigned, is the duly authorized representative of the bidder, and granted full power and authority to do, execute and perform any and all acts necessary to participate, submit the bid, and to sign and execute the ensuing contract for the [Name of Project] of the [Name of the Procuring Entity].
- l. We acknowledge that failure to sign each and every page of this Bid Form, including the Bill of Quantities, shall be a ground for the rejection of our bid.

Name: _____

Legal Capacity: _____

Signature: _____

Duly authorized to sign the Bid for and behalf of: _____

Date: _____

Other Bidding Forms

(ANNEX "B")

Annex "B" Form 1 Authority of Signatory (Secretary's Certificate)

CAAP-BAC-SF Annex "B" Form 1

**AUTHORITY OF SIGNATORY
(SECRETARY'S CERTIFICATE)**

I,, a duly elected and qualified Corporate Secretary of (Name of the Bidder), a corporation duly organized and existing under and by virtue of the law of the, DO HEREBY CERTIFY, that:

I am familiar with the facts herein certified and duly authorized to certify the same;

At the regular meeting of the Board of Directors of the said Corporation duly convened and held on at which meeting a quorum was present and acting throughout, the following resolutions were approve, and the same have been annulled, revoked and amended in any way whatever and are in full force and effect on the date hereof:

RESOLVED, that(Name of Bidder)be, as it hereby is, authorized to participate in the bidding of(Name of the Project)by the(Name of the Procuring Entity); and in that if awarded the project shall enter into a contract with the(Name of the Procuring Entity)and in connection therewith hereby appoints(Name of Representative), acting as duly authorized and designated representatives of(Name of the Bidder), and granted full power and authority to do, execute and perform any and all acts necessary and/or to represent(Name of the Bidder)in the bidding as fully and effectively as the(Name of the Bidder)might do if personally present with full power of substitution and revocation and hereby satisfying and confirming all that my said representative shall lawfully do or cause to be done by virtue hereof;

RESOLVED FERTHER THAT, the Board hereby authorized its President to:

- a. execute a waiver of jurisdiction whereby the(Name of the Bidder)hereby submits itself to the jurisdiction of the Philippine government and hereby waives its right to question the jurisdiction of the Philippine court;
- b. execute a waiver that the (Name of the Bidder) shall not seek and obtain writ of injunctions or prohibition or restraining order against the CAAP or any other agency in connection with this Project to prevent and restrain the bidding procedures related thereto, the negotiating and award of a contract to a successful bidder, and the carrying out of the awarded project.

WITNESS the signature of the undersigned as such officer of the said_this.

—

(Corporate Secretary)

SUBSCRIBED AND SWORN to before me this day of, 20affiant exhibited to me his/her Community Tax Certificate No. _____ issued on _____ at, Philippines.

Notary Public

Until 31 December 20_____

PRT No.: _____

Issued at: _____

Issued on: _____

TIN No.: _____

Doc. No. _____

Page No.: _____

Book No.: _____

Series of _____

Republic of the Philippines



Government Procurement Policy Board