AERODROME DEVELOPMENT
AND MANAGEMENT SERVICE

INFRASTRUCTURE DEVELOPMENT
AND DESIGN DIVISION

REVIEWED BY:

SUBMITTED BY

RECOMMEND APPROVAL:

APPROVED:

NOTES/REVISIONS:

PROJECT: 1

REHABILITATION OF PERIMETER FENCE
ALONG THE ACCESS ROAD (AIRSIDE)

LOCATION:

BUSUANGA AIRPORT
CORON-BUSUANGA ROAD, CORON, PALAWAN

SHEET CONTENTS:

- VICINITY MAP
- LOCATION MAP
- AIRPORT LAYOUT PLAN

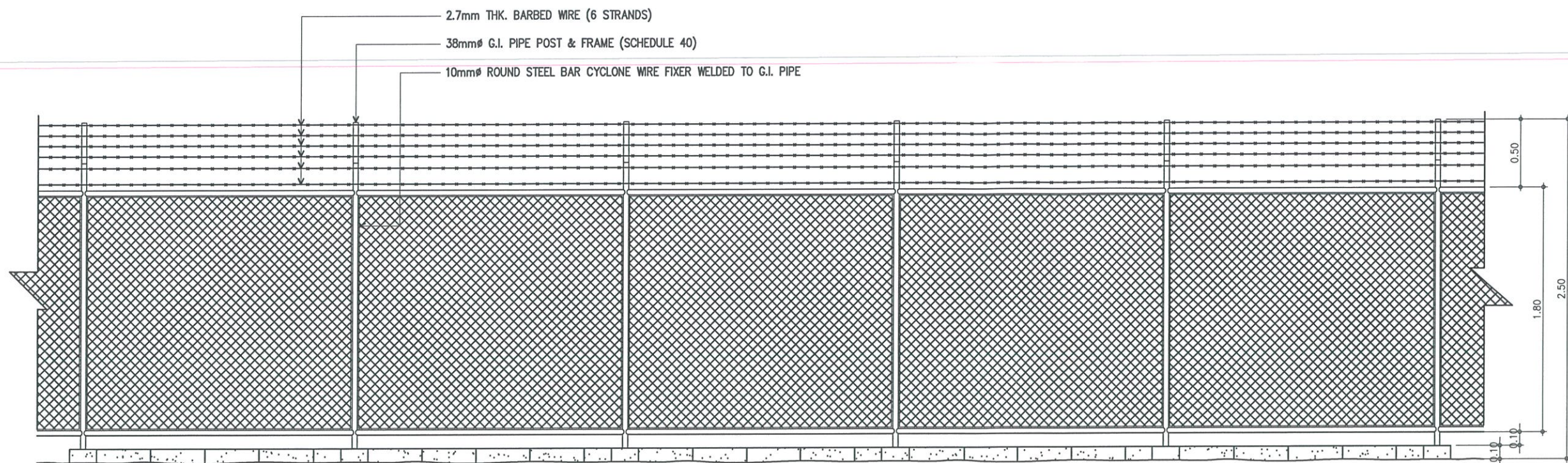
DRAWING SCALE:

AS SHOWN

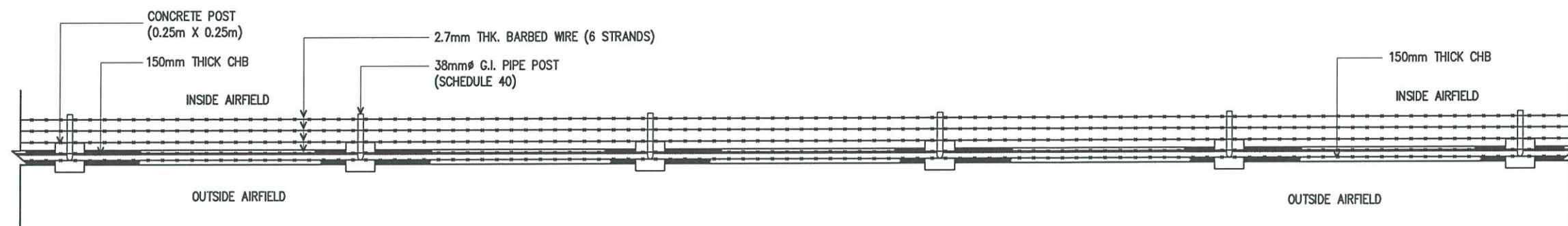
SHEET NO:

CW-01

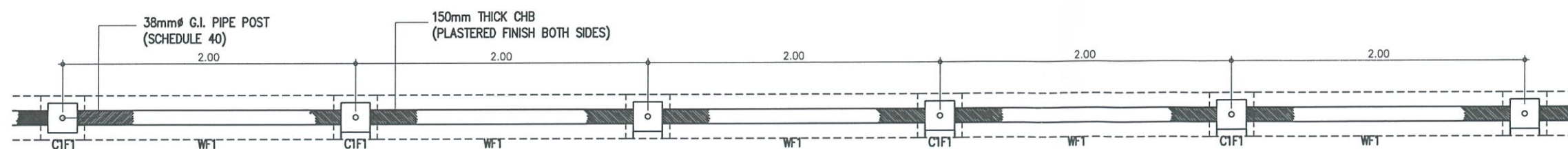
01	04
----	----



A-2 FRONT ELEVATION
SCALE 1:20MTS.



A-1 PLAN OF FENCE
SCALE 1:20MTS.



S-1 FOUNDATION PLAN
SCALE 1:20MTS.



CIVIL AVIATION AUTHORITY OF THE PHILIPPINES
AERODROME DEVELOPMENT AND MANAGEMENT SERVICE

THIS DRAWING IS EXCLUSIVE PROPERTY OF CIVIL AVIATION AUTHORITY OF THE PHILIPPINES AND MUST NOT BE REPRODUCED, EXHIBITED, LOANED OR COPIED IN PART OR IN WHOLE WITHOUT PROPER PERMISSION AND/OR WRITTEN CONSENT FROM THE DIRECTOR GENERAL CAAP.

AERODROME DEVELOPMENT AND MANAGEMENT SERVICE

INFRASTRUCTURE DEVELOPMENT AND DESIGN DIVISION

DESIGN STAFF	INITIAL/DATE
DESIGNED BY:	JD
DRAWN BY:	MD
CHECKED BY:	
DATE:	

REVIEWED BY:

RAUL R. GRUCENA
Division Chief III, IPDD - ADMS

SUBMITTED BY:

ARNEL F. BORLADO
Department Manager III, AED - ADMS

RECOMMEND APPROVAL:

LTCOL VALENTINO A DIONELA PAF (RET)
Assistant Director General II, ADMS

APPROVED:

LTGEN RAUL L DEL ROSARIO AFP (RET)
DIRECTOR GENERAL

NOTES/REVISIONS:

PROJECT:

REHABILITATION OF PERIMETER FENCE ALONG THE ACCESS ROAD (AIRSIDE)

LOCATION:

BUSUANGA AIRPORT
CORON-BUSUANGA ROAD, CORON, PALAWAN

SHEET CONTENTS:

- PLAN OF FENCE
- FRONT ELEVATION
- FOUNDATION PLAN

DRAWING SCALE:	SHEET NO:
AS SHOWN	CW-02
	02 04

THIS DRAWING IS EXCLUSIVE PROPERTY OF CIVIL AVIATION AUTHORITY OF THE PHILIPPINES AND MUST NOT BE REPRODUCED, EXHIBITED, LOANED OR COPIED IN PART OR IN WHOLE WITHOUT PROPER PERMISSION AND/OR WRITTEN CONSENT FROM THE DIRECTOR GENERAL CAAP.

AERODROME DEVELOPMENT AND MANAGEMENT SERVICE

INFRASTRUCTURE DEVELOPMENT AND DESIGN DIVISION

DESIGN STAFF	INITIAL/DATE
DESIGNED BY:	JDD
DRAWN BY:	JDD
CHECKED BY:	
DATE:	

REVIEWED BY:

RAUL R. CRUCENA
Division Chief III, IDDP - ADMS

SUBMITTED BY:

ARNEL F. BORLADO
Department Manager III, AED - ADMS

RECOMMEND APPROVAL:

LTCOL VALENTINO A DIONELA PAF (RET)
Assistant Director General II, ADMS

APPROVED:

LTGEN RAUL L DEL ROSARIO AFP (RET)
DIRECTOR GENERAL

NOTES/REVISIONS:

PROJECT:

REHABILITATION OF PERIMETER FENCE ALONG THE ACCESS ROAD (AIRSIDE)

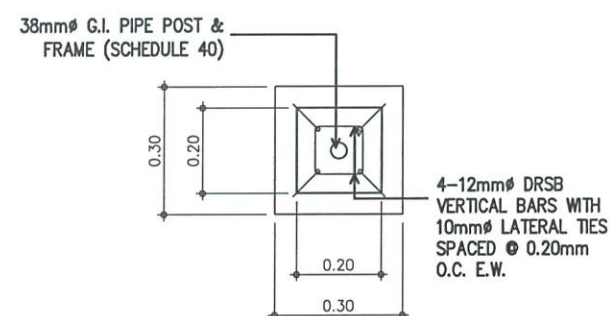
LOCATION:

BUSUANGA AIRPORT
CORON-BUSUANGA ROAD, CORON, PALAWAN

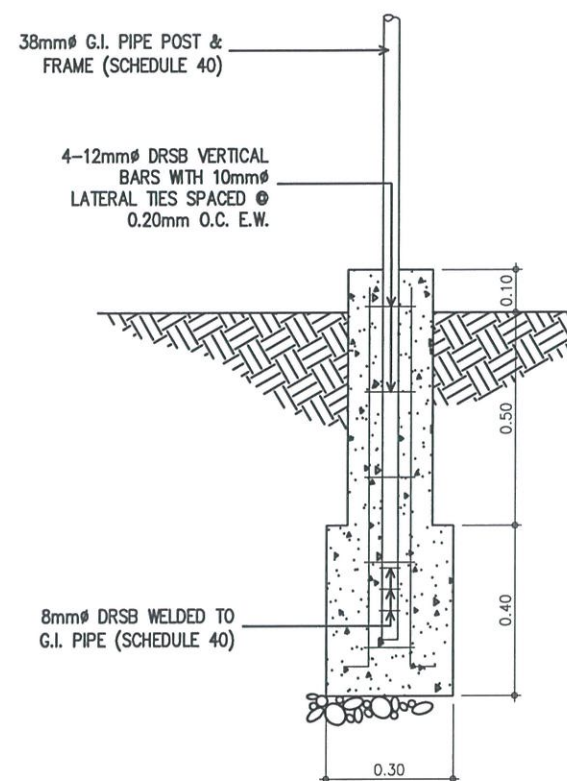
SHEET CONTENTS:

- DETAILED PLAN & ELEVATION OF COLUMN FOOTINGS
- DETAILED ELEVATION OF WALL FOOTING
- DETAILED PLAN OF G.I. PIPE AND FIXER

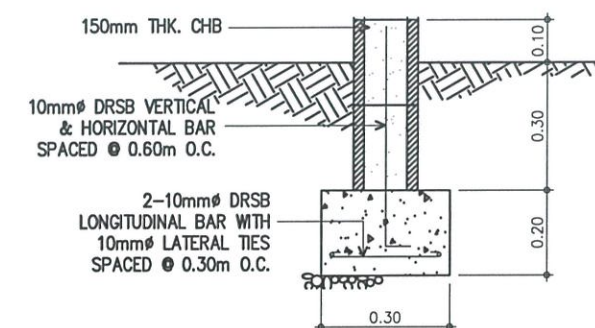
DRAWING SCALE:	SHEET NO:
AS SHOWN	CW-03
	03 04



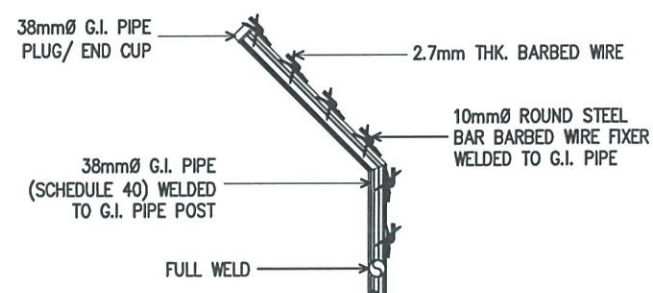
S-2
CW-3/CW-3 SCALE 1:20MTS.
DET. PLAN OF C1F1



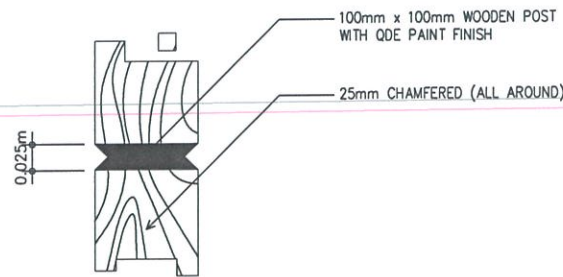
S-3
CW-3/CW-3 SCALE 1:10MTS.
DET. ELEVATION OF C1F1



S-4
CW-3/CW-3 SCALE 1:10MTS.
DET. ELEVATION OF WF1

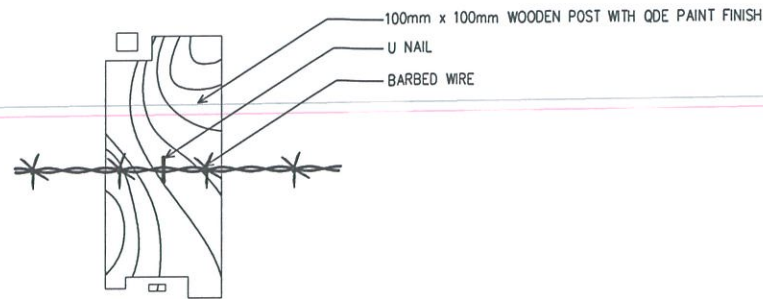


S-5
CW-3/CW-3 SCALE N.T.S.
DET. PLAN OF G.I. PIPE & STEEL BAR BARBED WIRE FIXER



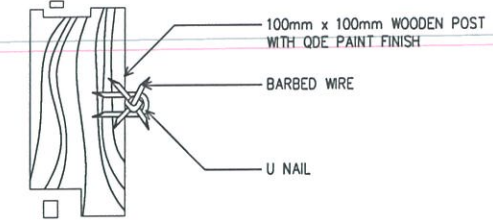
DET. OF CHAMFERED WOODEN POST

A-7
CW-4/CW-4
SCALE



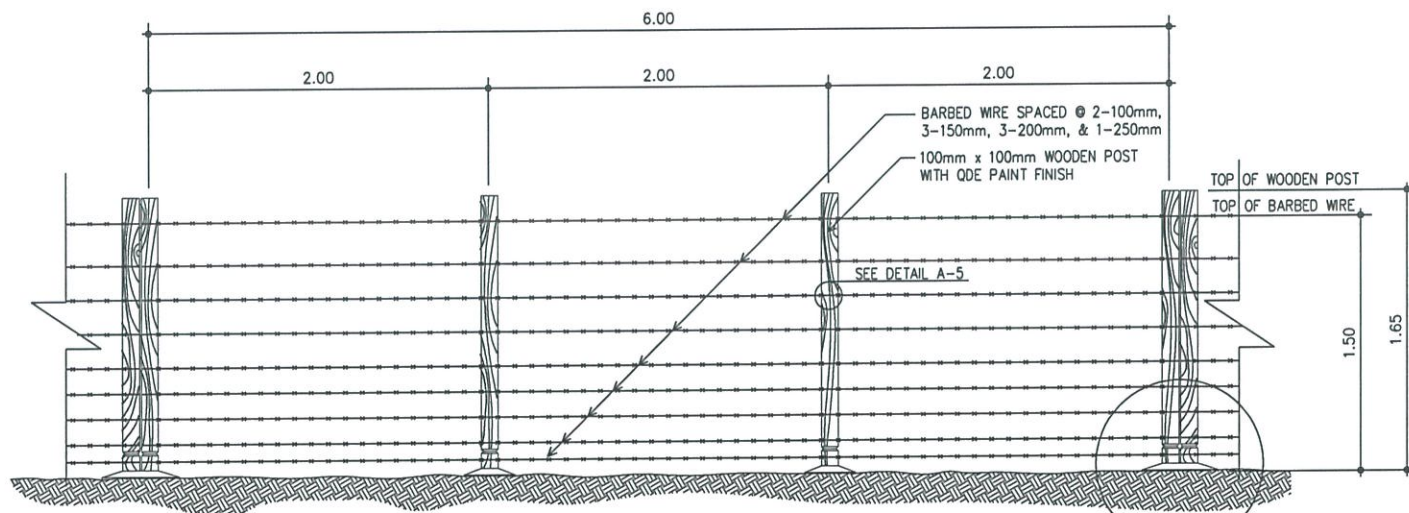
DETAIL ELEVATION OF BARBED WIRE FIXER

A-5
CW-4/CW-4
SCALE



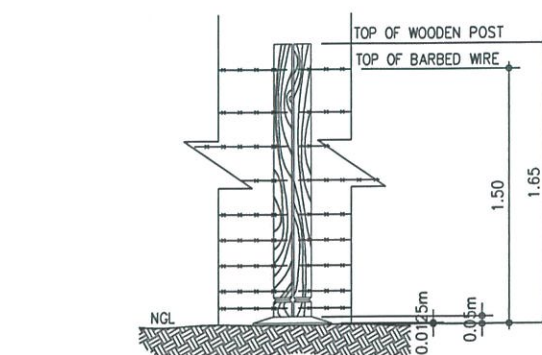
DETAIL OF WOODEN POST BARBED WIRE FIXER

A-6
CW-4/CW-4
SCALE



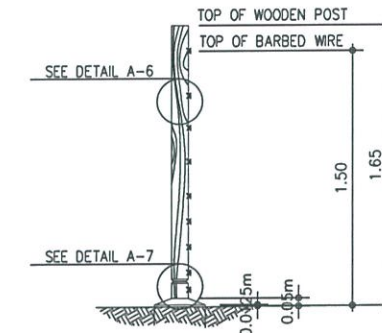
FRONT ELEVATION

A-2
CW-4/CW-4
SCALE



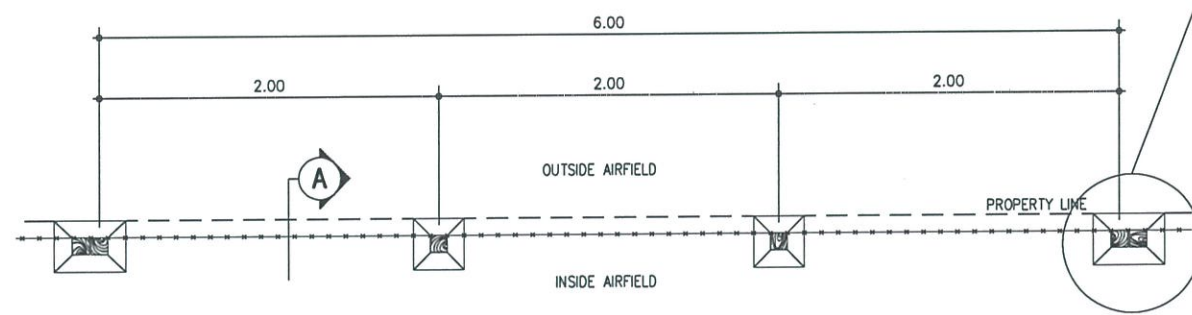
DETAIL ELEVATION OF COMBINED WOODEN POST

A-3
CW-4/CW-4
SCALE



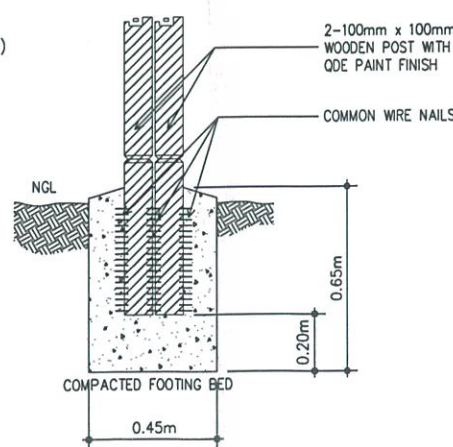
SECTION THRU "A"

A-4
CW-4/CW-4
SCALE

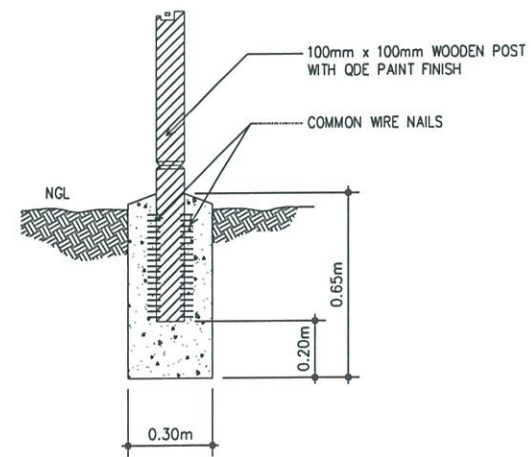


PLAN OF FENCE

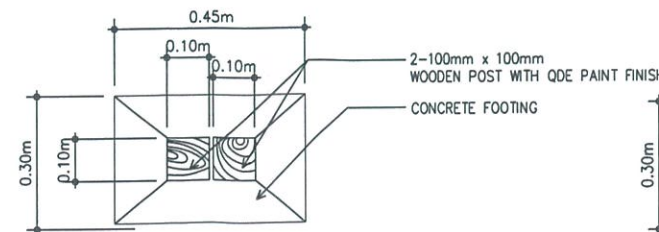
A-1
CW-4/CW-4
SCALE



SECTION



SECTION

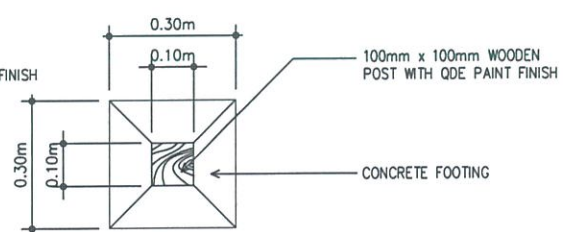


FOUNDATION PLAN OF FENCE

S-1
CW-4/CW-4
SCALE

DETAIL OF C1F1

S-2
CW-4/CW-4
SCALE



DETAIL OF C2F2

S-3
CW-4/CW-4
SCALE

THIS DRAWING IS EXCLUSIVE PROPERTY OF CIVIL AVIATION AUTHORITY OF THE PHILIPPINES AND MUST NOT BE REPRODUCED, EXHIBITED, LOANED OR COPIED IN PART OR IN WHOLE WITHOUT PROPER PERMISSION AND/OR WRITTEN CONSENT FROM THE DIRECTOR GENERAL CAAP.

AERODROME DEVELOPMENT AND MANAGEMENT SERVICE

INFRASTRUCTURE DEVELOPMENT AND DESIGN DIVISION

DESIGN STAFF	INITIAL/DATE
DESIGNED BY:	DDO
DRAWN BY:	MDL
CHECKED BY:	
DATE:	

REVIEWED BY:
RAUL R. CRUCENA
Division Chief III, IDDO - ADMS

SUBMITTED BY:
ARNEL F. BORLADO
Department Manager III, AED - ADMS

RECOMMEND APPROVAL:
LT COL VALENTINO A DIONELA PAF (RET)
Assistant Director General II, ADMS

APPROVED:
LT GEN RAUL L DEL ROSARIO AFP (RET)
DIRECTOR GENERAL

NOTES/REVISIONS:

PROJECT:
REHABILITATION OF PERIMETER FENCE ALONG THE ACCESS ROAD (AIRSIDE)

LOCATION:
**BUSUANGA AIRPORT
CORON-BUSUANGA ROAD, CORON, PALAWAN**

SHEET CONTENTS:
• PLAN OF FENCE (TYPE III-WOODEN POST)
• ELEVATION OF FENCE (TYPE III-WOODEN POST)
• CONNECTION DETAILS (TYPE III-WOODEN POST)
• FOUNDATION PLAN (TYPE III-WOODEN POST)
• DETAILS OF COLUMN FOOTING (TYPE III-WOODEN POST)

DRAWING SCALE:	SHEET NO:
AS SHOWN	CW-04
	04 04